

Wheelchair Accessible Toilet

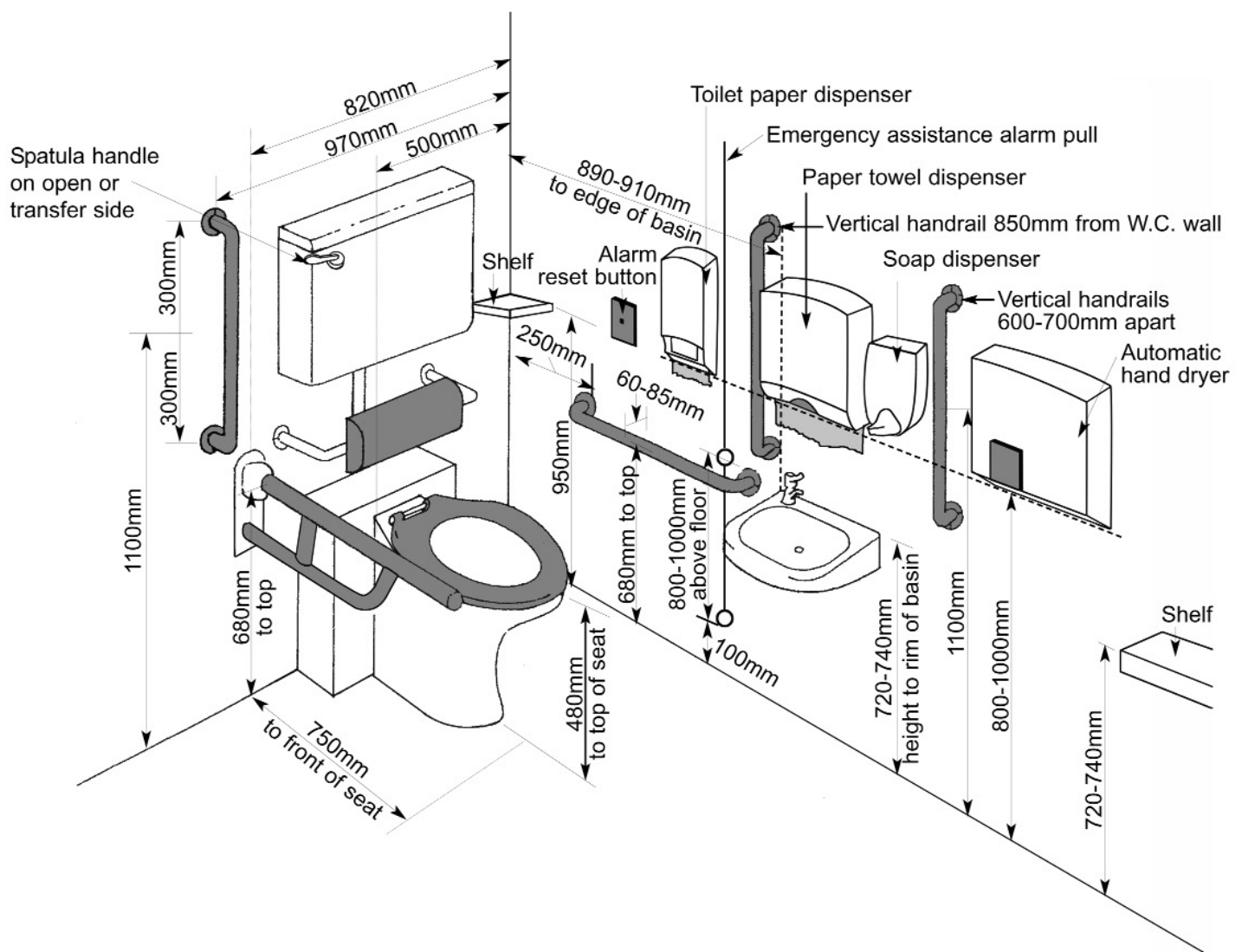
The minimum dimensions for a wheelchair accessible toilet are 1500mm x 2200mm.

Where there is space for only one toilet in a building, it must be a unisex wheelchair accessible toilet, but of a greater width to accommodate an additional wash basin at standing height. The width should be increased from 1.5m to 2m.

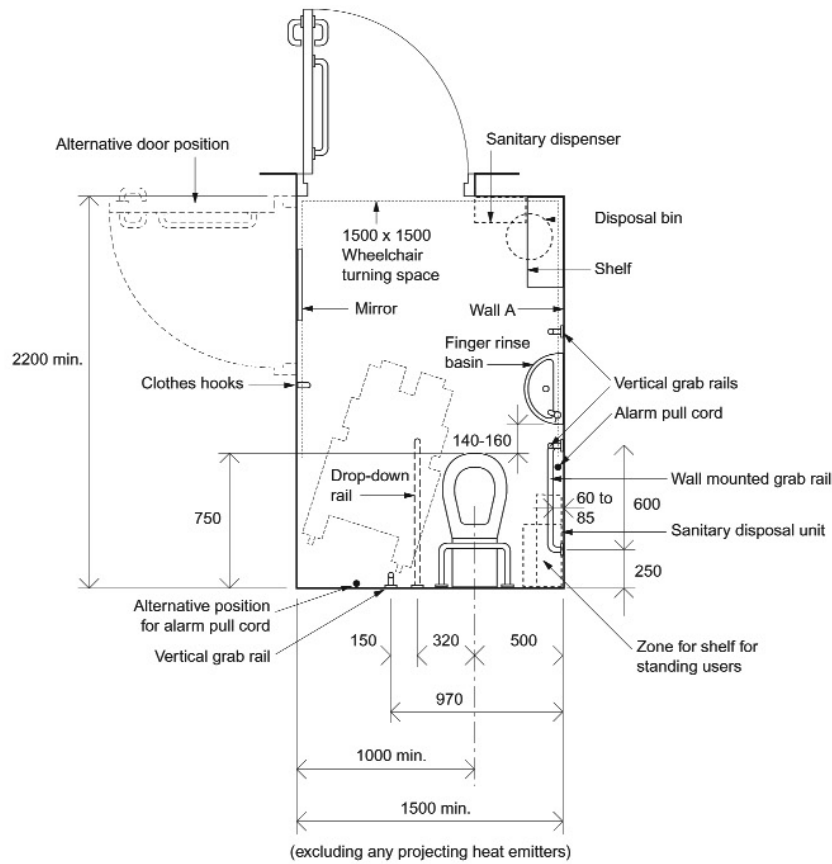
All fittings and grab-rails should contrast visually with the background wall and floor finishes and there should also be visual contrast between wall and floor finishes.

The relationship of the W.C. to the finger rinse basin and other accessories should allow a person to wash and dry hands while seated on the W.C.

For more comprehensive details and guidance, refer to Approved Document M which is available on the planning portal at www.planningportal.gov.uk



Unisex wheelchair-accessible toilet with corner WC



Note
Layout for right hand transfer to WC

Heights and arrangement of fittings in a unisex wheelchair-accessible toilet (looking towards wall A in Diagram above)

