



## **Newark & Sherwood Local Development Framework**

### **Plan Review**

### **Second Publication Amended Allocations & Development Management DPD – Post Consultation Changes**

## **Policies Map**

**September 2023**

## **Document Passport**

**Title:** Newark and Sherwood Plan Review Amended Allocations & Development Management DPD Second Publication Policies Map

**Status:** Second Publication Policies Map

**Summary:** The Policies Map contributes to the portfolio of documents forming the Newark & Sherwood Local Development Framework. The Second Publication Policies Map geographically expresses the proposed amendments to the Policies Map arising from the Newark & Sherwood Plan Review.

**Route of Approval for Publication:** Cabinet 19 September 2023  
Full Council 20 September 2023

**Date of Approval for Publication:** 20 September 2023

---

**Consultation Summary:** Public consultation was undertaken on the Plan Review on a number of occasions between 2015 and 2017, this led to the Amended Core Strategy being produced first and then more detailed consultation on the Allocations & Development Management proposals undertaken in July – August 2019 and July – September 2021. The First Publication DPD was published for consultation in Winter 2022. Following the close to the representation period, of significance was a representation from the Environment Agency and a change in situation regarding the Gypsy & Traveller Pitch Delivery Strategy. As a result, the Second Publication DPD is subject to a period of representation. People who feel that the DPD is not 'sound' under the terms of the Planning Regulations can make a representation on the matter to the Council.

**Representation period:** From Monday 25 September 2023 until 5pm on Monday 6 November 2023. Copies of this document and guidance on how to make representations are deposited at Castle House (open between 9am and 5pm Monday to Friday), the District's Libraries and on the Council's Website: <https://www.newark-sherwooddc.gov.uk/aadm-representation/>

**After the Representation period:** Following a period when representations will be sought on this document a finalised DPD will be submitted to the Secretary of State in December 2023 and assessed by an independent Inspector in Spring of 2024.

**Estimated Date of Final Adoption:** May 2024

Matt Lamb MPLAN MPA MRTPI  
Director – Planning & Growth  
Newark & Sherwood District Council  
Castle House  
Great North Road  
Newark  
Nottinghamshire  
NG24 1BY

# Contents

<b>1.0</b>	<b>Introduction .....</b>	<b>1</b>
<b>2.0</b>	<b>Second Publication Policies Map .....</b>	<b>2</b>
<b>3.0</b>	<b>Matters of Fact .....</b>	<b>5</b>
<b>4.0</b>	<b>How to Make a Representation .....</b>	<b>6</b>
	<b>Appendix 1 – Policies Map Proposed Changes.....</b>	<b>7</b>
	<b>Appendix 2 – Proposed Changes from Previous Regulation 19 Consultation in 2022.....</b>	<b>8</b>

## 1.0 Introduction

- 1.1 The District Council is currently undertaking a 'Plan Review' of its various Development Plan Documents ('DPDs') within its Local Development Framework ('LDF'). The Local Development Framework forms the local element of the Development Plan for the area providing a spatial strategy for its future development and to shape decision-making by the District Council both in terms of investment and in the determination of planning applications. It will also influence the other public sector bodies and private organisations in their decision making and investment plans in the District.
- 1.2 Local Planning Authorities (LPAs) must include within the LDF an adopted Policies Map. This Policies Map must be revised each time the approval of a Development Plan Document (DPD) would result in changes to the adopted Policies Map and should express geographically the most up-to-date adopted Development Plan policies of the LPA. The Policies Map can only be changed as a result of a DPD being adopted. The current Policies Map is available to view at:  
<https://www.newark-sherwooddc.gov.uk/policiesmap/>
- 1.3 The first element of the Plan Review has already been completed, and this was the Amended Core Strategy which was adopted in March 2019. The second element of this Plan Review is the Amended Allocations and Development Management DPD ('ADMDDP'), which has been published for a period of consultation. As a result of the adoption of the Amended Core Strategy in 2019, Map 10 (Edwinstowe) in the Allocations and Development Management DPD and the electronic Policies Map will be amended to include SHaP4 (Thoresby Colliery). These changes have already been 'adopted' and the changes have the sole purpose of updating the Policies Map to reflect the Development Plan.

### Publication DPDs

- 1.4 Alongside the publication of a DPD, the District Council is required to produce a Publication Policies Map identifying how the adopted Policies Map will be amended or added to. This document sets out the proposed additions, amendments and deletions from the Policies Map and the 14 maps contained in the Allocations and Development Management DPD.
- 1.5 For the purposes of this consultation, these 14 maps have been updated, **however the interactive online Policies Map will be updated upon adoption of the new DPD**. The proposed maps are contained at Appendix 1.



## **2.0 Second Publication Policies Map**

- 2.1 Upon adoption, the Amended Allocations & Development Management DPD Policies Map will be amended to reflect the most up-to-date policies of the District's Development Plan. The revised Policies Map will form part of the Newark & Sherwood Local Development Framework.
- 2.2 The table below accompanies the Second Publication Allocations and Development Management DPD and details the proposed changes to the Policies Map which will occur through the adoption of the DPD in its current form. This table only shows changes made since the last Regulation 19 consultation in Winter 2022/23 and should be read in conjunction with the changes made in the previous iteration of this document. This table is contained at Appendix 2.
- 2.2 The proposed changes are also shown geographically on the Second Publication Policies Maps contained at Appendix 1. The table below also includes reference to the relevant inset map in the existing online interactive Policies Map so a comparison of the proposed changes can be shown geographically for consultees.

<b><i>Development Management Policies</i></b>					
<b>Change Ref</b>	<b>Publication AADMDPD Ref</b>	<b>Proposed Changes to Policies Map</b>	<b>Reason for Proposed Change</b>	<b>Online Policies Map Inset Ref<sup>1</sup></b>	<b>Publication AADMDPD Map Ref</b>
001	Policies Map	Remove open space at Fourth Avenue, Edwinstowe	Play area has relocated to area of open space adjacent to the site and the area highlighted on the Policies Map has now been built on.	Inset Map 9	Map 11
002	Policies Map	Mineral Safeguarding Area	Changes to colours of layers to improve visibility (particularly where there is overlap)	n/a	Map 17
003	Policies map	Remove Elm Avenue from SP8 GIS layer	Has full planning permission for 9 dwellings.	Inset Map 1	Map 1
004	Policies Map	Add Scheduled Ancient Monuments layer from Historic England to Laxton Map	Matters of Fact. Accidentally omitted first time round.	n/a	Map 9
005	Policies Map	Additional open spaces / amendments / removal of open spaces included on policies map across the district	Additional open spaces in Fernwood requested to be mapped by Parish Council. Review of other sites under construction / recently completed to include further new open spaces. Removal of sites where they are not open space.	All	All
006	Policies Map	Amend area of NUA/E/3 and E/2	Requested by landowner to more accurately reflect land available for development. Amendments remain wholly within original allocated area.	Inset Map 1	Map 1
007	Policies Map	Amend label on Sutton Map to say 'indicative local centre'	Location is not precise, so amended wording better reflects situation.	Inset Map 4	Map 5
008	Policies Map	Amend boundary of school on Middlebeck to reflect built form on ground.	Requested by Urban & Civic	Inset Map 1	Map 2
009	Policies Map	Amend site boundaries of NUA/GRT/10 and NUA/GRT/2 to reflect correct site boundary	Identified in ongoing G&T work	Inset Maps 1	Map 1&2

<sup>1</sup> [http://www.cartogold.co.uk/newark\\_sherwood/map.htm](http://www.cartogold.co.uk/newark_sherwood/map.htm)

010	Policies Map	Additional gypsy and traveller allocation at Shannon Falls, Tolney Lane	Identified in ongoing G&T work	Inset Map 1	Map 1&2
011	Policies Map	Additional gypsy and traveller allocation at Newark Road, Ollerton	Identified in ongoing G&T work	Inset Map 8	Map 10
012	Policies Map	Amend NUA/GRT/8 to reflect true extent of site	Identified in ongoing G&T work	Inset Map 1	Map 1&2
013	Policies Map	Amendments to Coddington Open Break to reflect TOWN-PLANNING representation (007)	To better reflect boundaries on the ground	Inset Map 1	Map 1
014	Policies Map	Alterations to sequential numbering of gypsy and traveller allocation references	To follow a more logical pattern	Inset Map 1 & 8	Map 1 & 2
015	Policies Map	Create defined local centre for Fernwood	Previously undefined	Inset Map 1	Map 2

## 3.0 Matters of Fact

- 3.1 There are also a number of designations included on the Policies Map that are considered to be ‘matters of fact’, as whilst their geographical expressions are linked to the implementation of policies within the Local Development Framework, Newark & Sherwood District Council is not the responsible defining body and / or their location and extent is not subject to review through the preparation of the Amended Allocations and Development Management DPD.
- 3.2 Accordingly, the Policies Map reflects the current location and extent of these designations. However, should these be subject to review and amendment, then the Policies Map will be updated, as necessary, in order to reflect the most up-to-date definitions.
- 3.3 Please note these are only the changes that have occurred since the previous Regulation 19 consultation which was undertaken in Winter 2022/23.
- 3.4 The following therefore form part of the Policies Map and any changes are explained:

<b>‘Matter of Fact’ Designations</b>	<b>‘Matter of Fact’ Changes</b>
Birklands & Bilhaugh Special Area of Conservation (SAC)	None
Sites of Specific Scientific Interest (SSSIs)	None
Sherwood Forest National Nature Reserve	None
Local Nature Reserves	Additional sites / boundary changes
Sites of Interest for Nature Conservation (SINCs)	New data from Nottinghamshire Biological & Geological Records Centre which has provided an update
Conservation Areas	Amendments to Newark and Southwell Conservation Area
Scheduled Ancient Monuments	None
Registered Historic Parks and Gardens	None
Highway / Public Transport Schemes identified within the Local Transport Plan (Ollerton Roundabout and Kelham Bypasses);	None
Hazardous substance installations	None
Groundwater Source Protection Zone	None
Mineral Safeguarding Areas	Adopted by Nottinghamshire County Council in March 2021
Other	None

## 4.0 How to Make a Representation

- 4.1 Representations on the Publication Policies Map can be made from the 25<sup>th</sup> September 2023 until 6<sup>th</sup> November 2023. Copies of this document and guidance on how to make a representation are to be deposited at Castle House (open between 9:00am and 5:00pm Monday to Friday), the District's libraries and on the Council's website:

<https://www.newark-sherwooddc.gov.uk/aadm-representation/>

- 4.2 Alternatively representation forms can be obtained from Castle House and libraries around the District or downloaded from the Council's website (see above for the web address).

- 4.3 Completed forms should be posted to:

Planning Policy & Infrastructure Business Unit  
Newark & Sherwood District Council  
Castle House  
Great North Road  
Newark  
Nottinghamshire  
NG24 1BY

Or emailed to:

[planningpolicy@nsdc.info](mailto:planningpolicy@nsdc.info)

- 4.4 If you have any questions about this document or the Local Development Framework, please contact Planning Policy on 01636 655850.

## Appendix 1 – Policies Map Proposed Changes

The following maps have been inserted into the Publication Allocations and Development Management DPD to replace the maps in the adopted DPD.

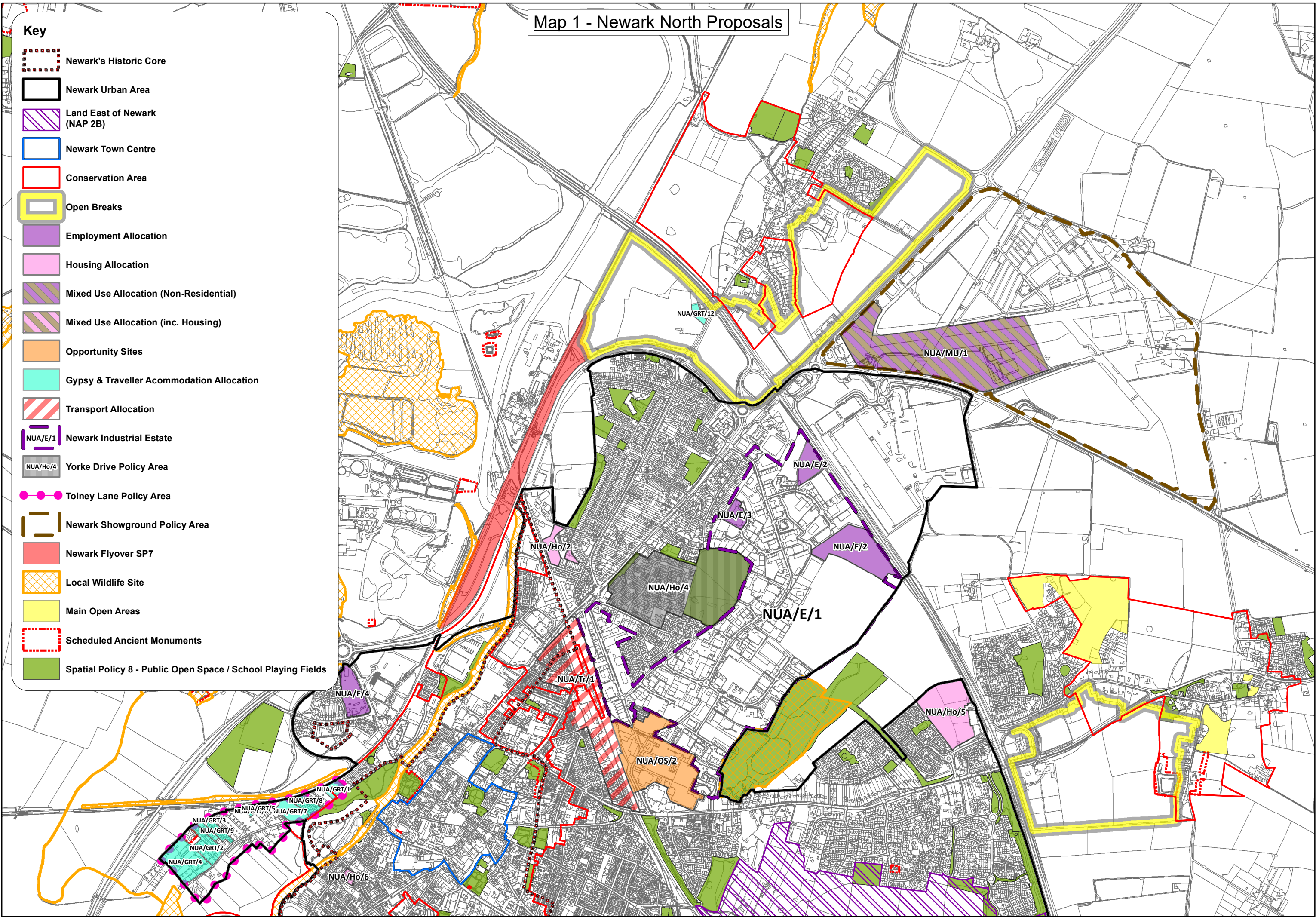
Map 1	Newark North
Map 2	Newark South
Map 3	Newark Town Centre
Map 4	Collingham
Map 5	Sutton on Trent
Map 6	Southwell
Map 7	Farnsfield
Map 8	Lowdham
Map 9	Laxton
Map 10	Ollerton & Boughton
Map 11	Edwinstowe
Map 12	Bilsthorpe
Map 13	Rainworth
Map 14	Clipstone
Map 15	Blidworth



Map 1 - Newark North Proposals

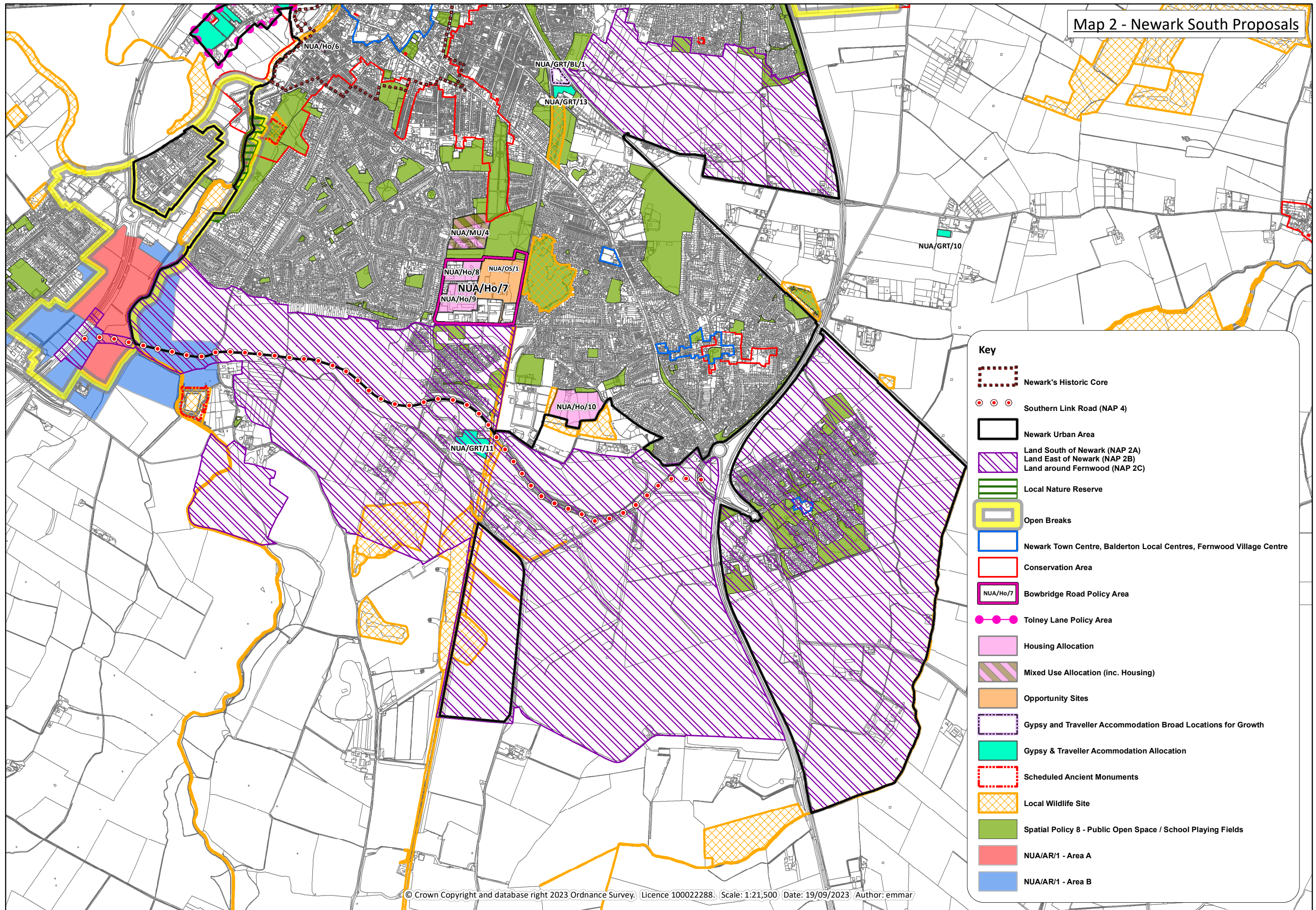
Key

- Newark's Historic Core
- Newark Urban Area
- Land East of Newark (NAP 2B)
- Newark Town Centre
- Conservation Area
- Open Breaks
- Employment Allocation
- Housing Allocation
- Mixed Use Allocation (Non-Residential)
- Mixed Use Allocation (inc. Housing)
- Opportunity Sites
- Gypsy & Traveller Accommodation Allocation
- Transport Allocation
- Newark Industrial Estate
- Yorke Drive Policy Area
- Tolney Lane Policy Area
- Newark Showground Policy Area
- Newark Flyover SP7
- Local Wildlife Site
- Main Open Areas
- Scheduled Ancient Monuments
- Spatial Policy 8 - Public Open Space / School Playing Fields





Map 2 - Newark South Proposals

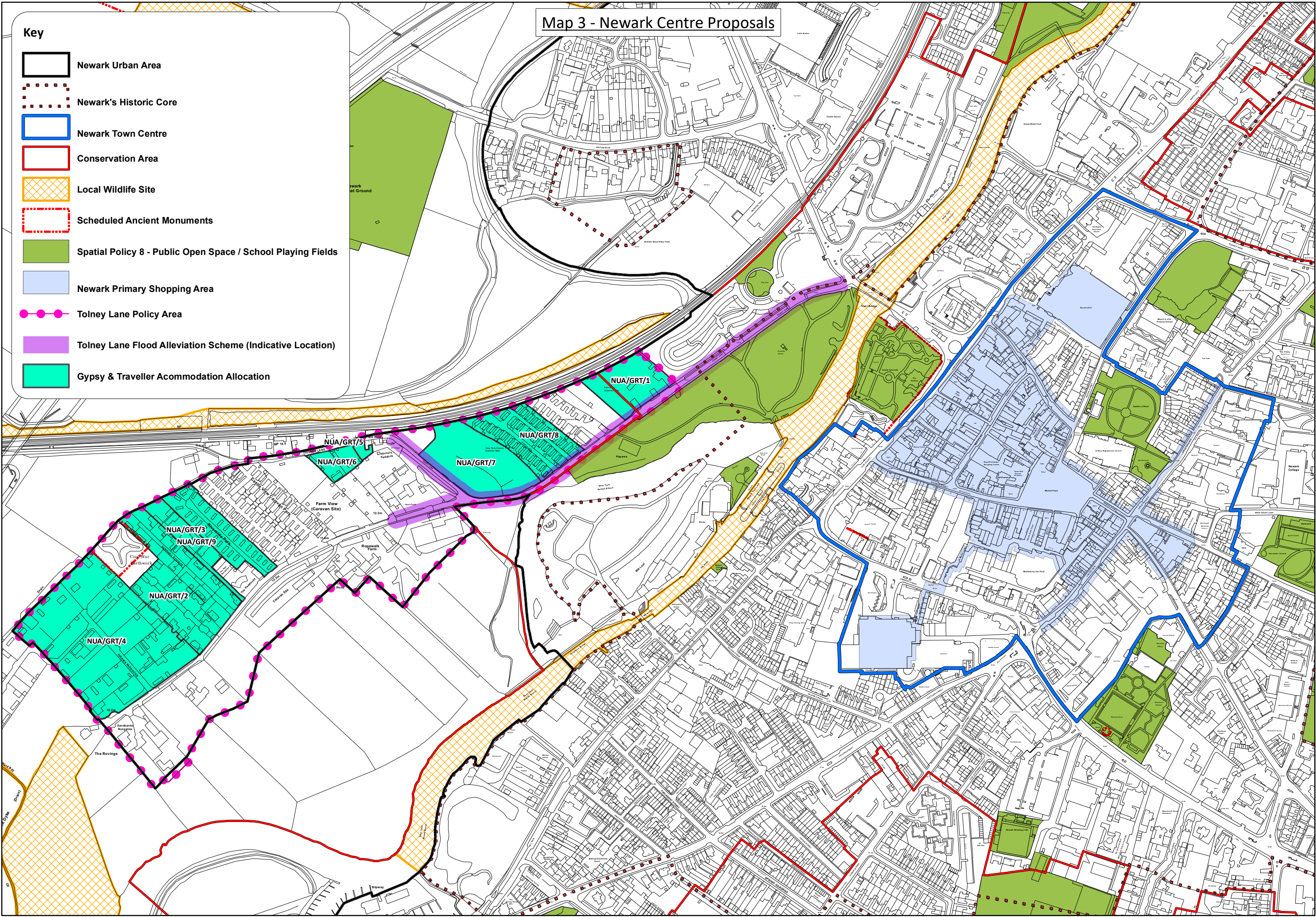




Map 3 - Newark Centre Proposals

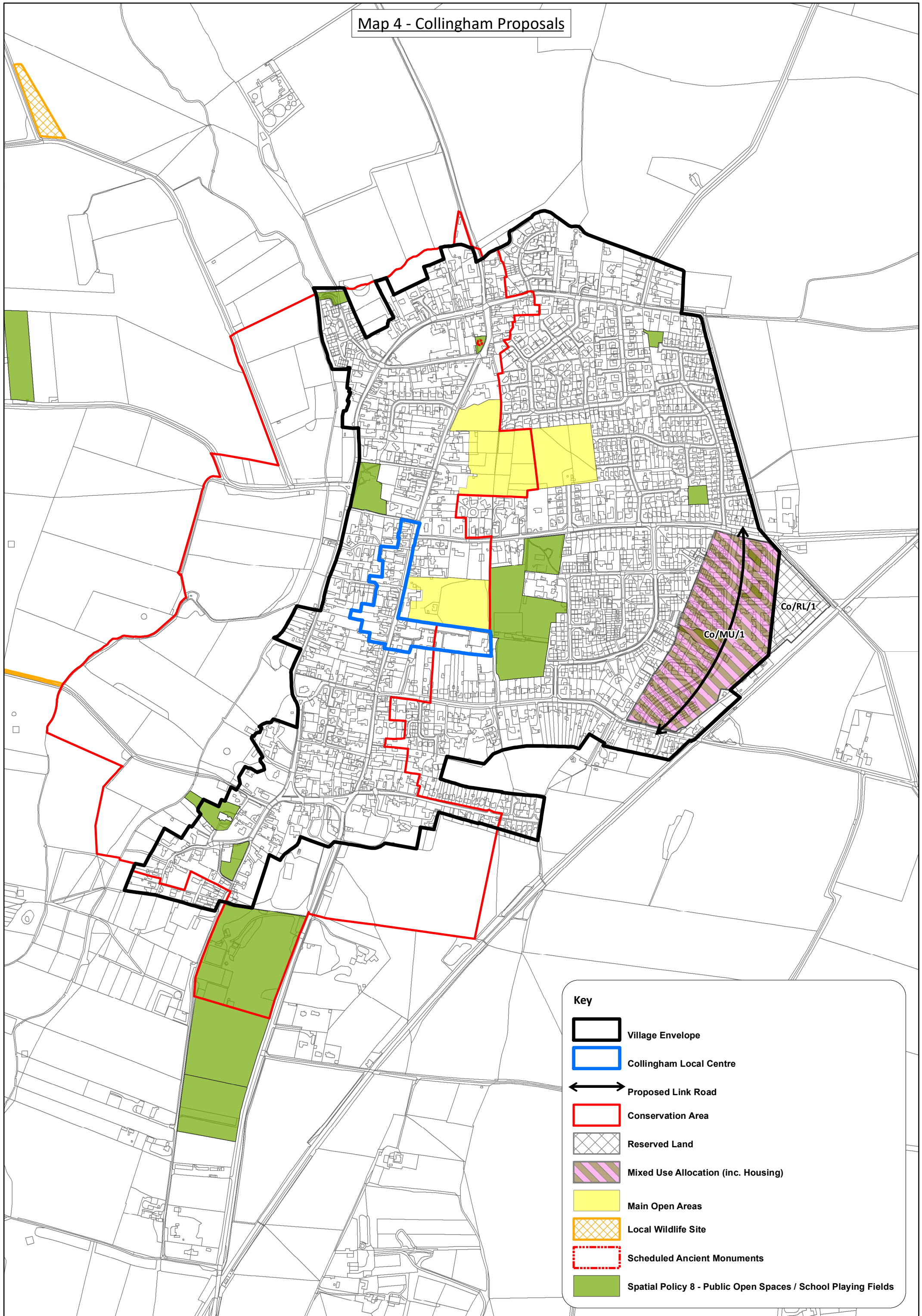
Key

- Newark Urban Area
- Newark's Historic Core
- Newark Town Centre
- Conservation Area
- Local Wildlife Site
- Scheduled Ancient Monuments
- Spatial Policy 8 - Public Open Space / School Playing Fields
- Newark Primary Shopping Area
- Tolney Lane Policy Area
- Tolney Lane Flood Alleviation Scheme (Indicative Location)
- Gypsy & Traveller Acommodation Allocation





Map 4 - Collingham Proposals

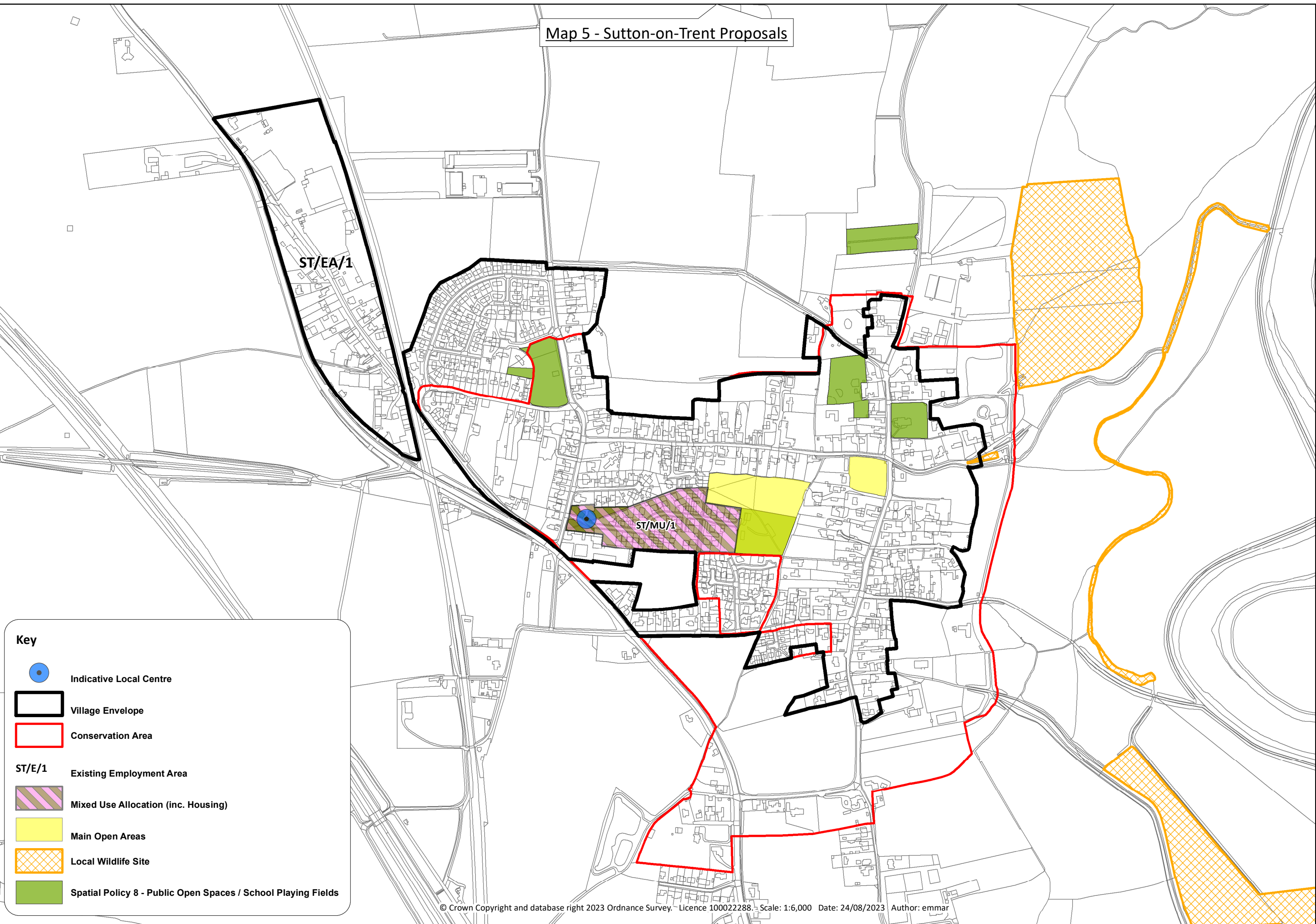


Key

- Village Envelope
- Collingham Local Centre
- Proposed Link Road
- Conservation Area
- Reserved Land
- Mixed Use Allocation (inc. Housing)
- Main Open Areas
- Local Wildlife Site
- Scheduled Ancient Monuments
- Spatial Policy 8 - Public Open Spaces / School Playing Fields



Map 5 - Sutton-on-Trent Proposals



Key



Indicative Local Centre



Village Envelope



Conservation Area

ST/E/1

Existing Employment Area



Mixed Use Allocation (inc. Housing)



Main Open Areas



Local Wildlife Site



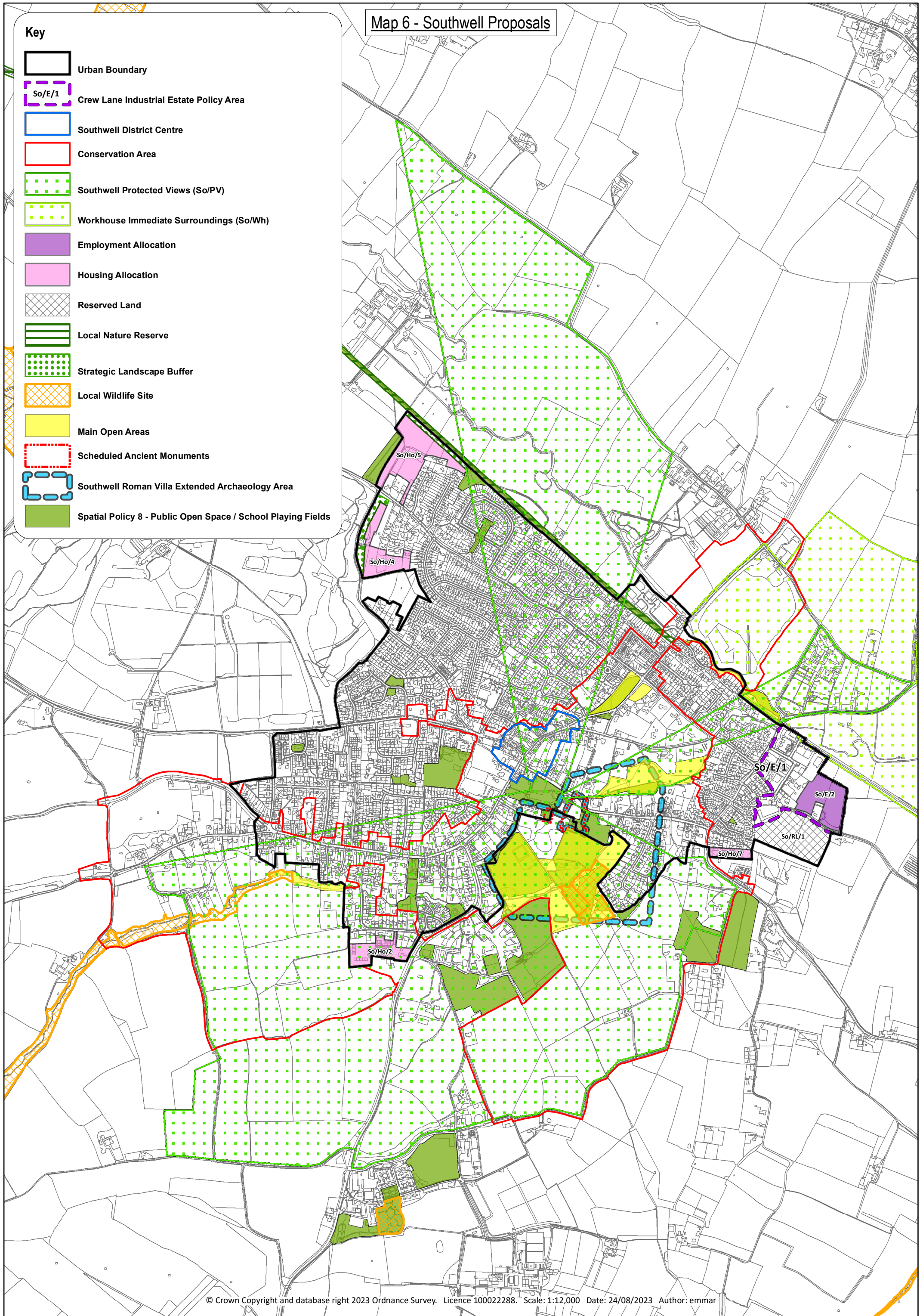
Spatial Policy 8 - Public Open Spaces / School Playing Fields



Map 6 - Southwell Proposals

Key

- Urban Boundary
- So/E/1 Crew Lane Industrial Estate Policy Area
- Southwell District Centre
- Conservation Area
- Southwell Protected Views (So/PV)
- Workhouse Immediate Surroundings (So/Wh)
- Employment Allocation
- Housing Allocation
- Reserved Land
- Local Nature Reserve
- Strategic Landscape Buffer
- Local Wildlife Site
- Main Open Areas
- Scheduled Ancient Monuments
- Southwell Roman Villa Extended Archaeology Area
- Spatial Policy 8 - Public Open Space / School Playing Fields





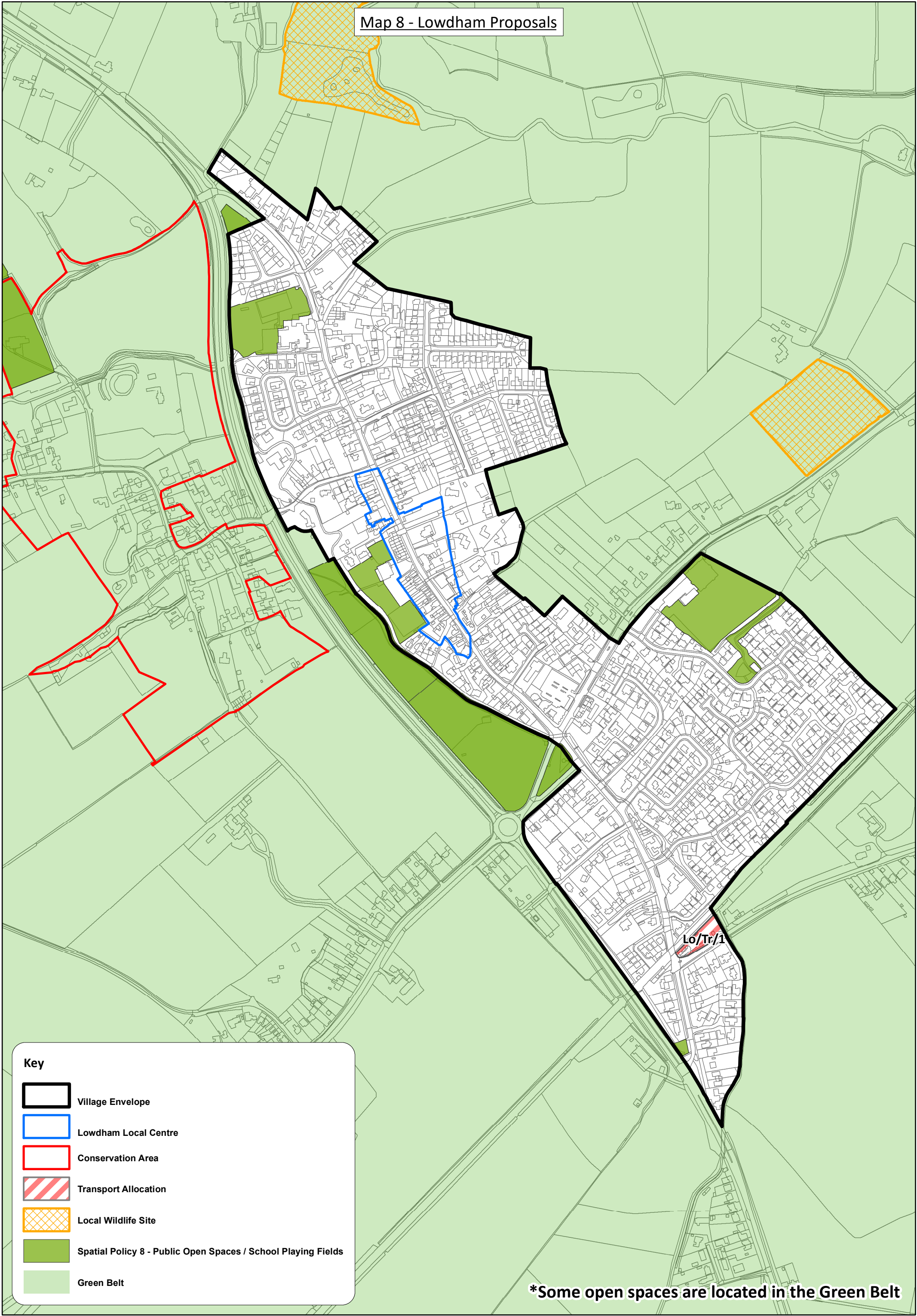
Map 7 - Farnsfield Proposals

**Key**

-  Village Envelope
-  Farnsfield Local Centre
-  Local Nature Reserve
-  Conservation Area
-  Local Wildlife Site
-  Spatial Policy 8 - Public Open Space / School Playing Fields



Map 8 - Lowdham Proposals



Key

-  Village Envelope
-  Lowdham Local Centre
-  Conservation Area
-  Transport Allocation
-  Local Wildlife Site
-  Spatial Policy 8 - Public Open Spaces / School Playing Fields
-  Green Belt

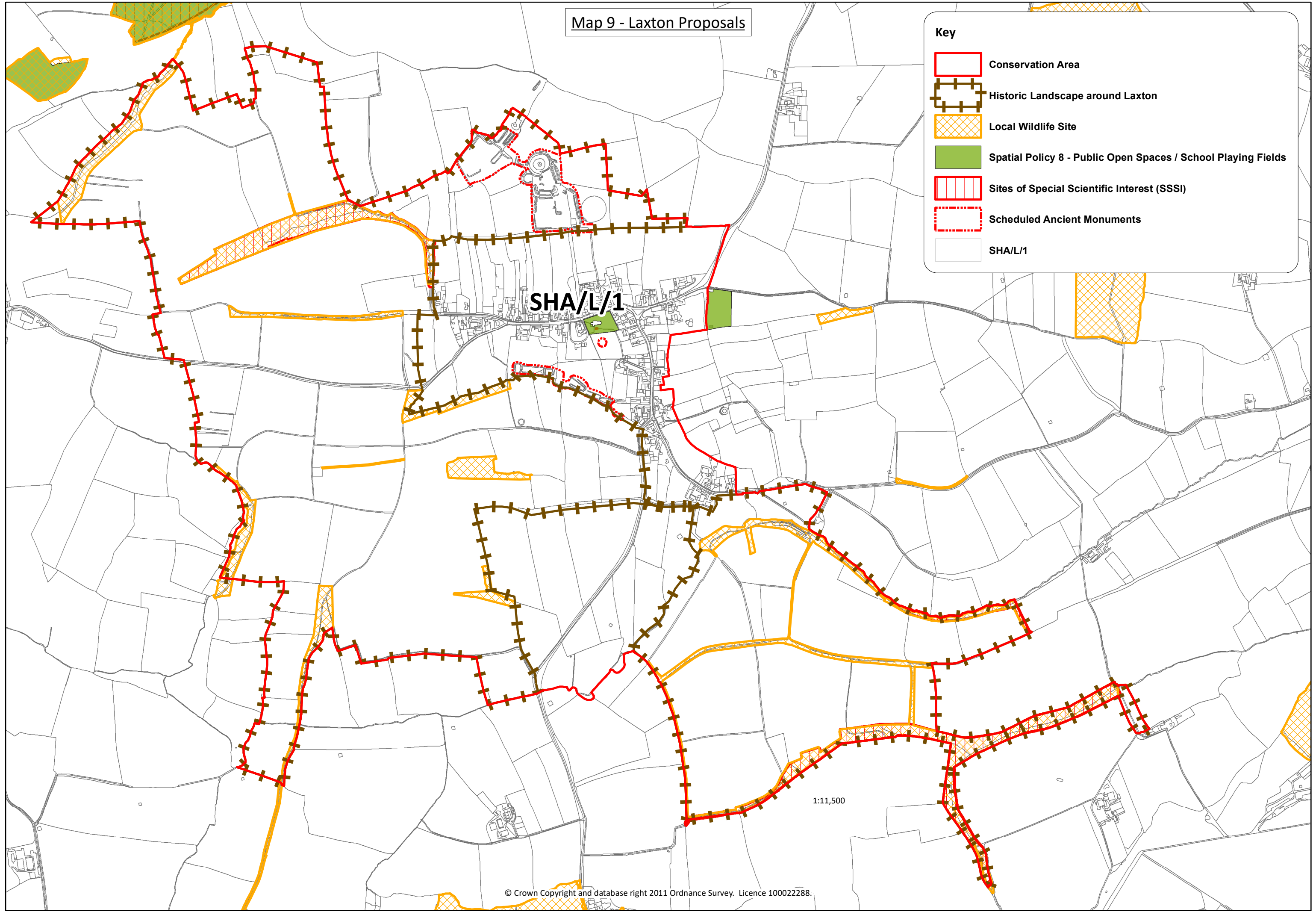
**\*Some open spaces are located in the Green Belt**



Map 9 - Laxton Proposals

Key

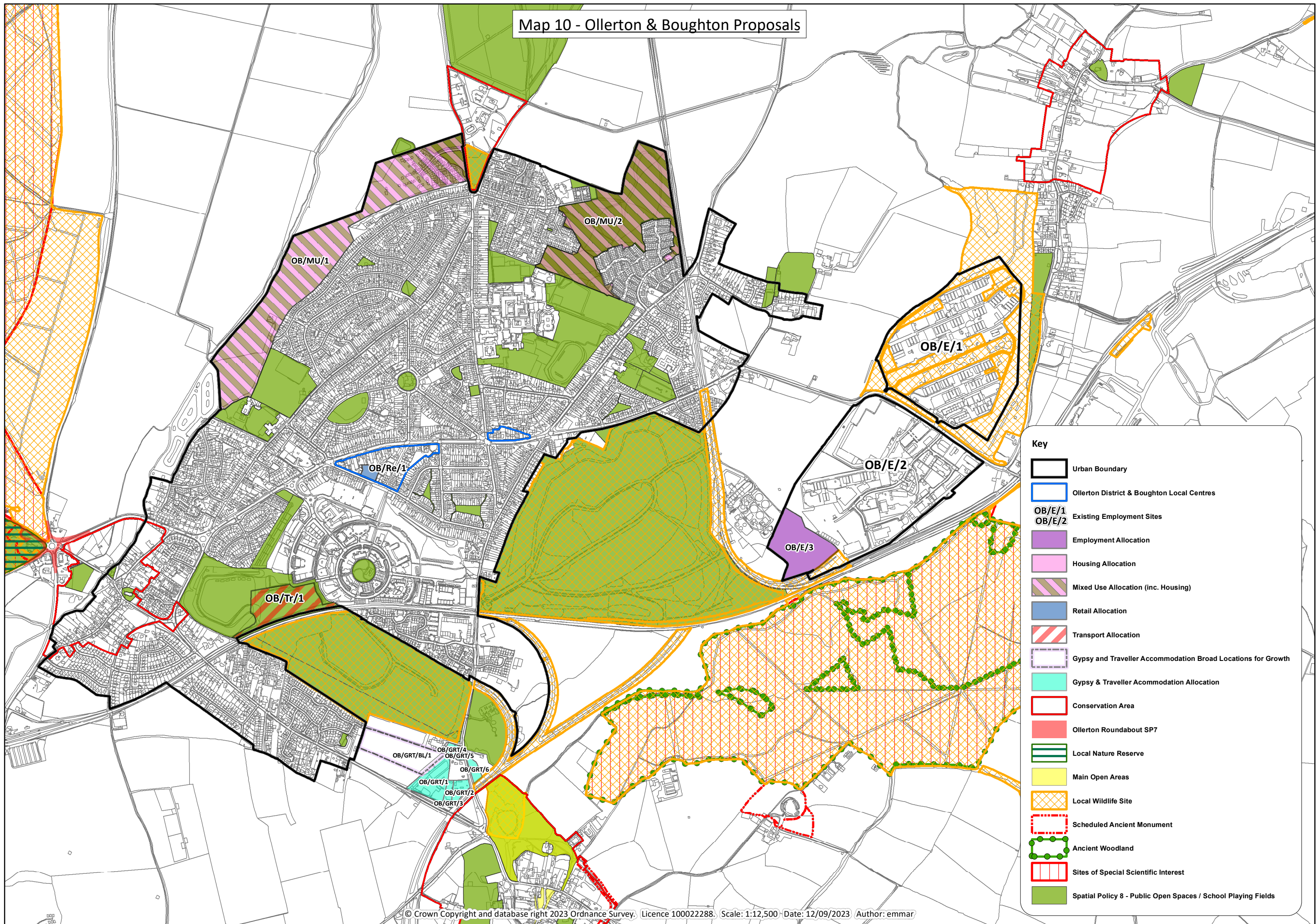
- Conservation Area
- Historic Landscape around Laxton
- Local Wildlife Site
- Spatial Policy 8 - Public Open Spaces / School Playing Fields
- Sites of Special Scientific Interest (SSSI)
- Scheduled Ancient Monuments
- SHA/L/1



1:11,500

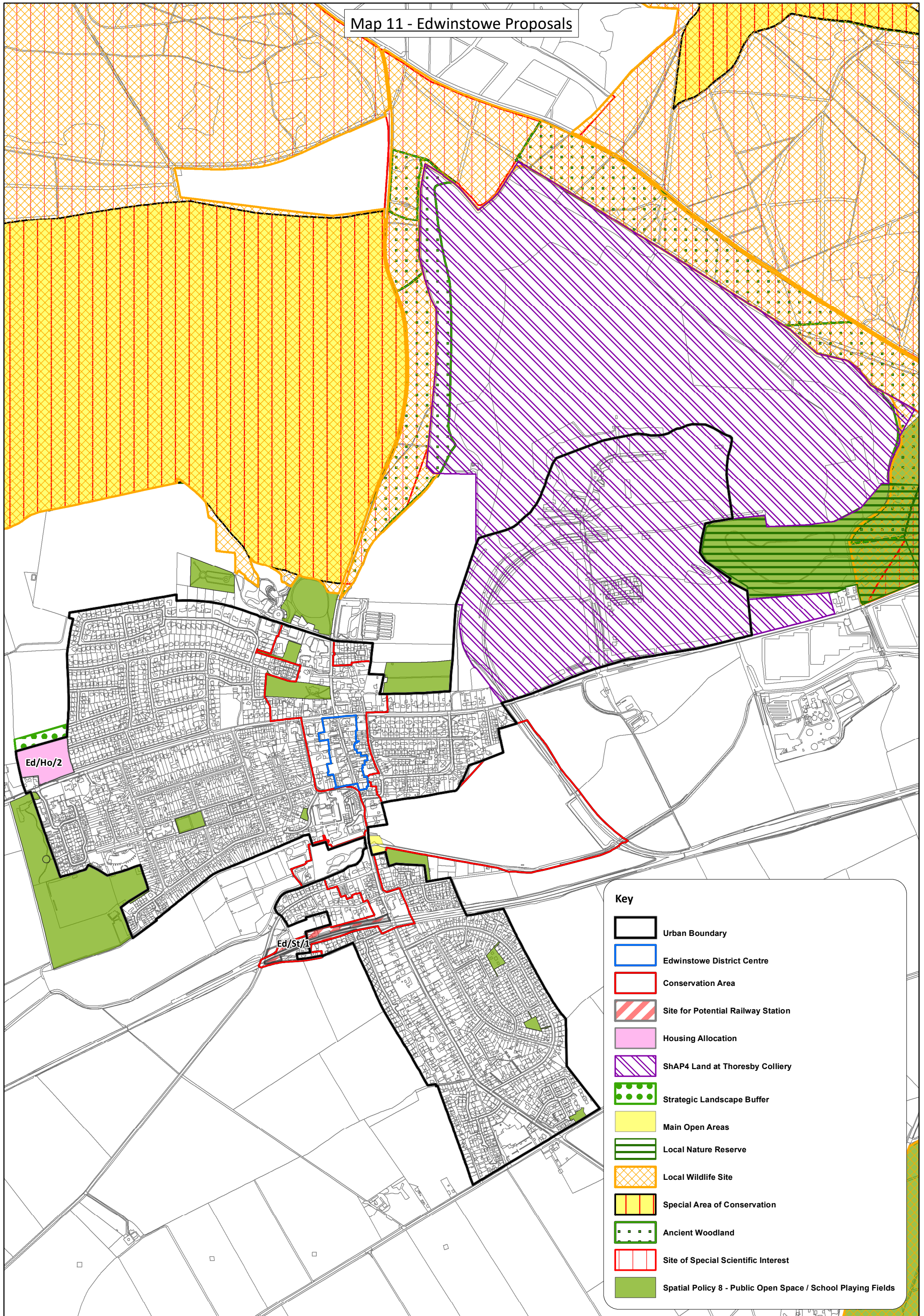


Map 10 - Ollerton & Boughton Proposals



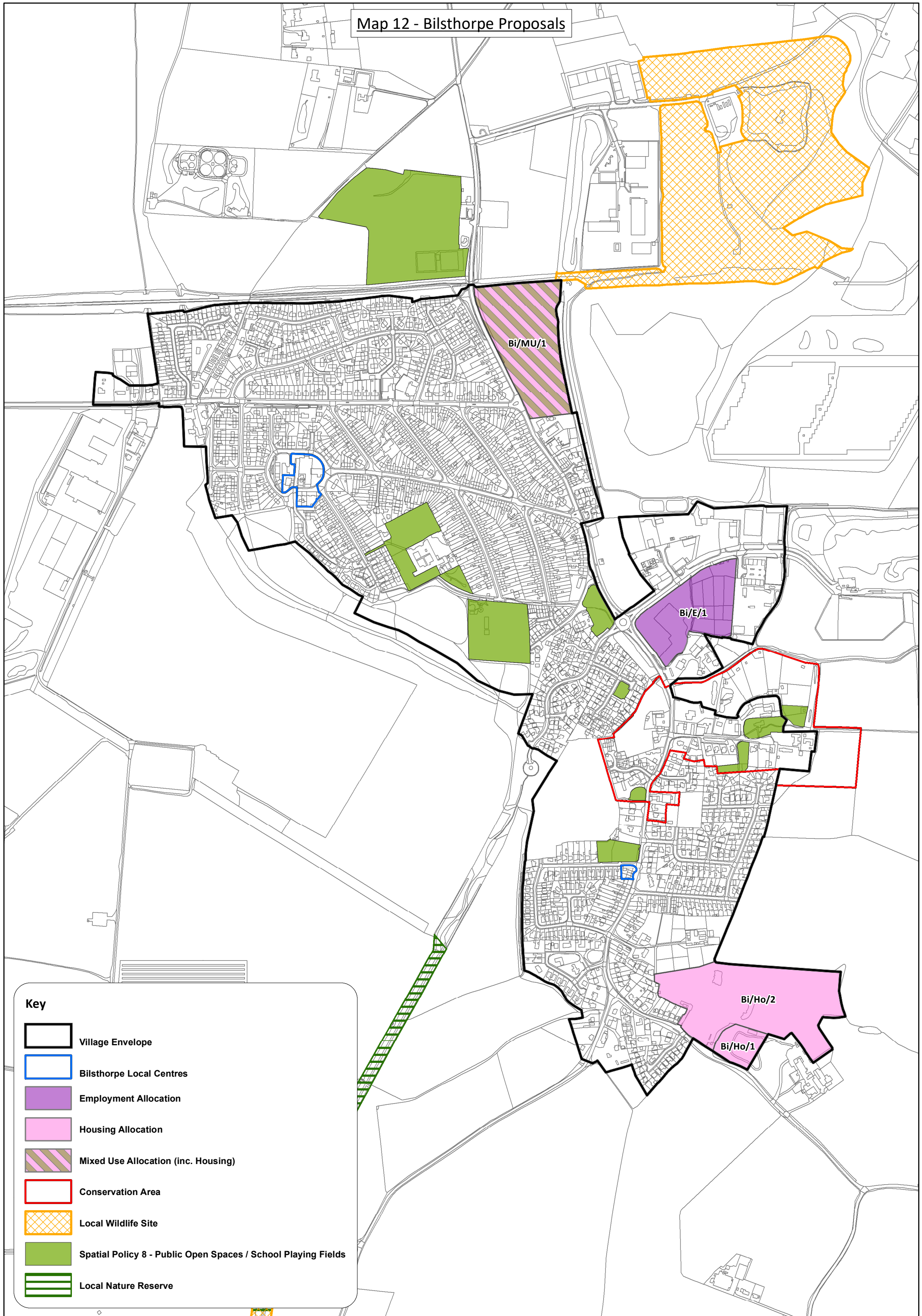


Map 11 - Edwinstowe Proposals





Map 12 - Bilsthorpe Proposals

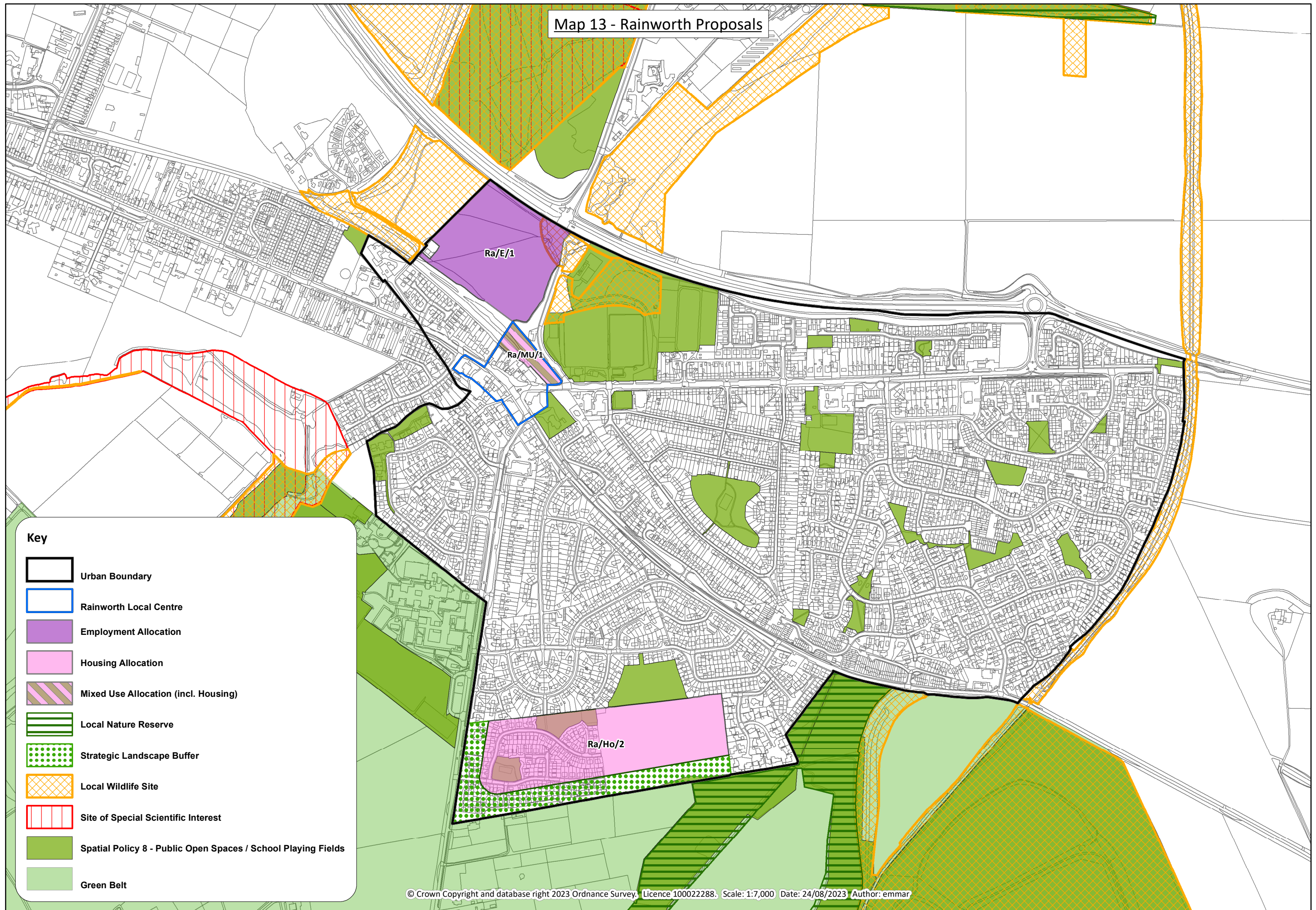


Key

- Village Envelope
- Bilsthorpe Local Centres
- Employment Allocation
- Housing Allocation
- Mixed Use Allocation (inc. Housing)
- Conservation Area
- Local Wildlife Site
- Spatial Policy 8 - Public Open Spaces / School Playing Fields
- Local Nature Reserve

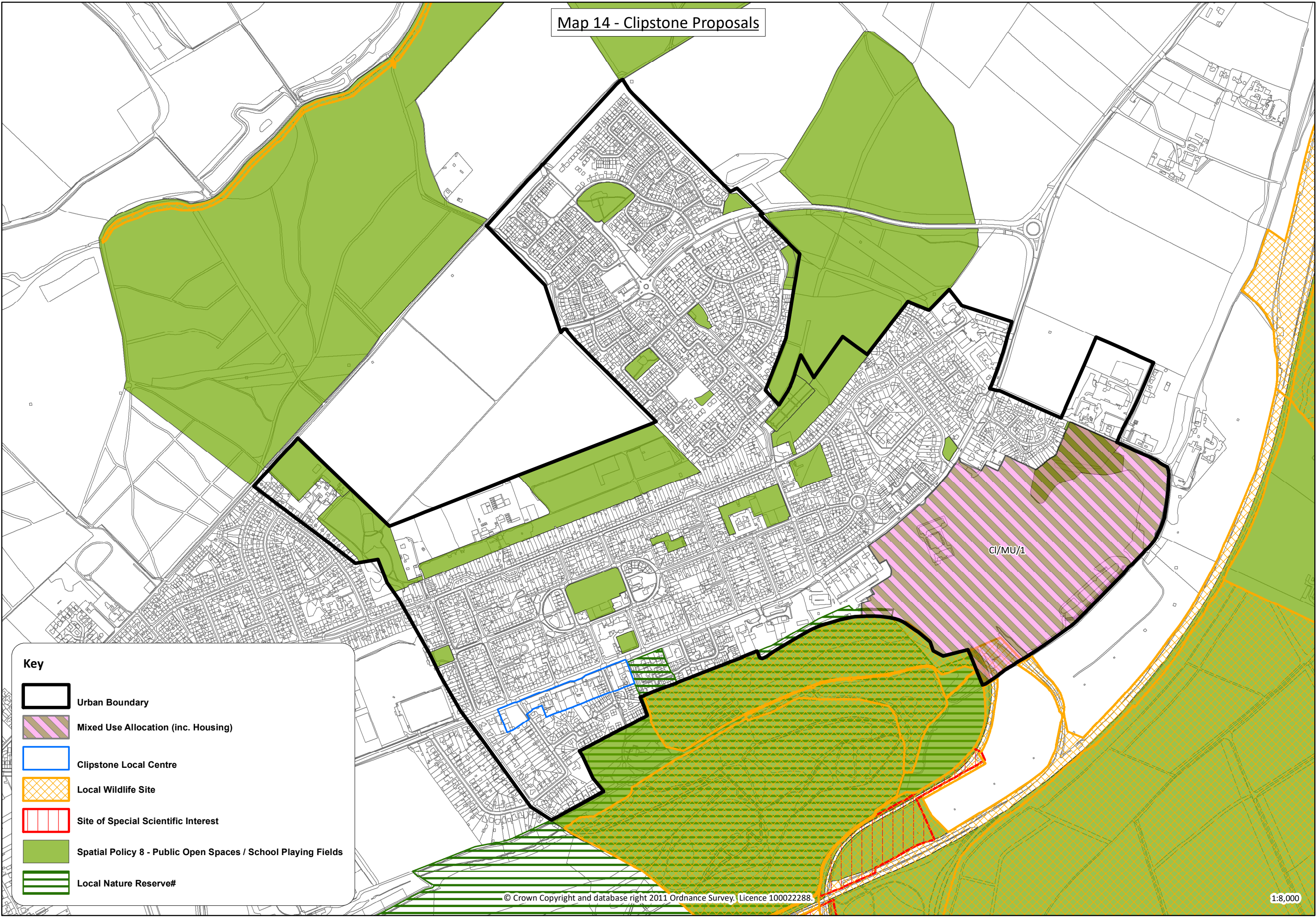


Map 13 - Rainworth Proposals





Map 14 - Clipstone Proposals



Key

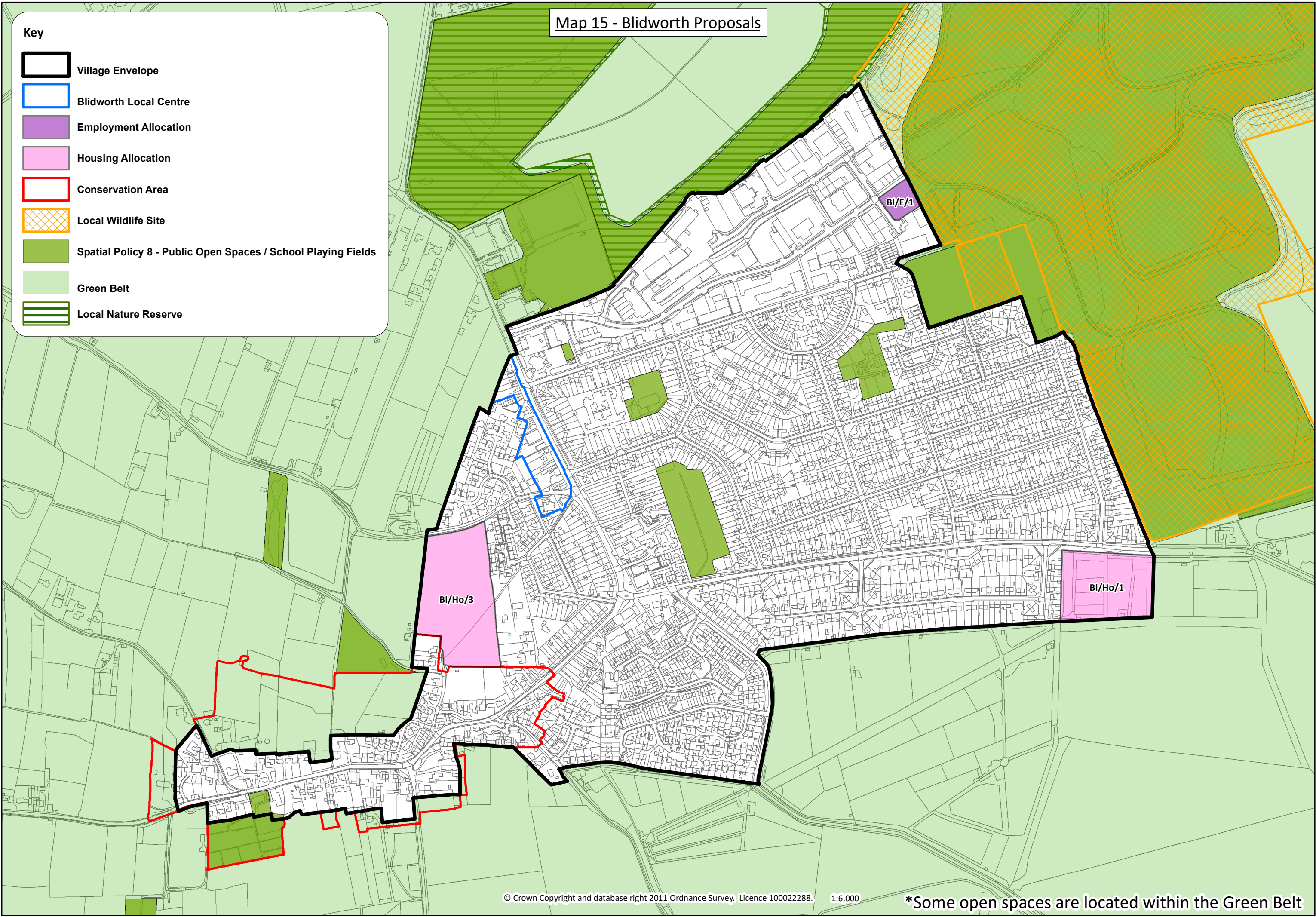
- Urban Boundary
- Mixed Use Allocation (inc. Housing)
- Clipstone Local Centre
- Local Wildlife Site
- Site of Special Scientific Interest
- Spatial Policy 8 - Public Open Spaces / School Playing Fields
- Local Nature Reserve#



Map 15 - Blidworth Proposals

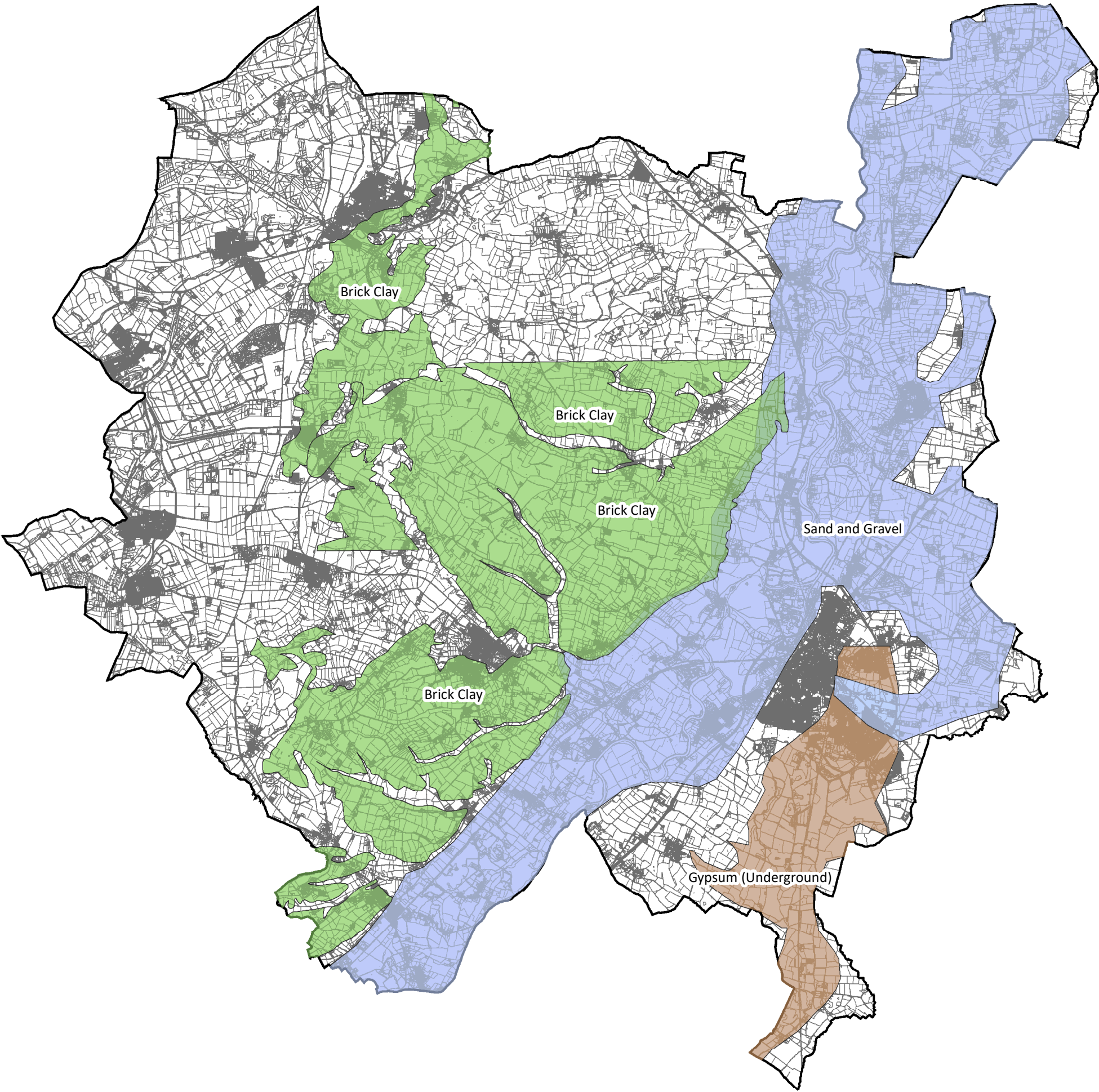
Key

-  Village Envelope
-  Blidworth Local Centre
-  Employment Allocation
-  Housing Allocation
-  Conservation Area
-  Local Wildlife Site
-  Spatial Policy 8 - Public Open Spaces / School Playing Fields
-  Green Belt
-  Local Nature Reserve





Mineral Safeguarding Areas



**Key**

**Type**

- Brick Clay
- Gypsum (Underground)
- Sand and Gravel
- NSDC District Boundary
- Gypsum (Underground)
- Sand and Gravel
- Brick Clay

## **Appendix 2 – Proposed Changes from Previous Regulation 19 Consultation in 2022**

## Appendix 2: Previously Proposed changes to the Publication Policies Map as consulted on in 2022.

<b><i>Development Management Policies</i></b>					
<b>Change Ref</b>	<b>Publication AADMDPD Ref</b>	<b>Proposed Changes to Policies Map</b>	<b>Reason for Proposed Change</b>	<b>Online Policies Map Inset Ref<sup>1</sup></b>	<b>Publication AADMDPD Map Ref</b>
1	Policy GRT2 Policy GRT3 Policy GRT4	Gypsy & Traveller Allocations are identified on the Publication Policies Map	New policy for Gypsy & Traveller accommodation and inclusion of allocations on Policies Map is necessary.	Inset Map 1 Inset Map 8	1, 2, 9
2	Policy GRT5	Tolney Lane Policy Area identified on Publication Policies Map	To integrate flood alleviation Policies, and to assist with the determination of day-to-day development demands of occupants so that sites are able to meet modern standards.	Inset Map 1	1
3	NUA/GRT/BL/1 OB/GRT/BL/1	Inclusion of two Broad Locations for Growth on Publication Policies map	To identify land which has the potential to supplement formal site allocations and accommodate additional pitches in the future, but which are either not necessary to allocate at this moment in time or that have a specific issue which requires further investigation. They are however in suitable locations for traveller site development and there is the reasonable prospect that the site is available and could be viably developed at the point envisaged.	Inset Map 1 Inset Map 8	1, 2, 9
4	NUA/AR/1 NUA/AR/2 So/AR/1	Addition of Archaeological areas to Publication Policies Map	To identify the areas that are significant archaeological locations at Newark and Southwell that are undesignated heritage assets of national archaeological importance.	Inset Map 1 Inset Map 5	1, 2, 6
5	NUA/TC/1	Amendment of Newark Primary Shopping area to include Morrisons and Asda	Both supermarkets were previously outside the Primary Shopping Area but it was felt necessary to include due to the link to the town centre as a result of providing car parking capacity.	Inset Map 1	3

<sup>1</sup> [http://www.cartogold.co.uk/newark\\_sherwood/map.htm](http://www.cartogold.co.uk/newark_sherwood/map.htm)



## Appendix 2: Previously Proposed changes to the Publication Policies Map as consulted on in 2022.

6	Policy SP8	Updated to include sites mapped in Open Space Strategy and existing SP8 sites reviewed and amended / removed where necessary.	The Open Space Strategy prepared by KKP in 2021 provided GIS data for all sites within the Open Space Strategy. The Policies Map has been updated to include this data. A review of existing SP8 sites to update those where changes have occurred as a result of development etc.	All	All
7	Policy ST/MOA	Update boundary of Main Open Area in Sutton on Trent	To reflect the delivery of ST/MU/1.	Inset Map 4	5
8	NUA/OS	Opportunity Sites are identified on the Publication Policies Map	To identify land which has the potential to supplement formal site allocations and accommodate additional development in the future, but which are either not necessary to allocate at this moment in time or that have a specific issue which requires further investigation.	Inset Map 1	1, 2
9	NUA/OB/1	Amendments to Open Breaks	To amend the extent of the Open Breaks at Farndon, Winthorpe and Coddington to reflect the Open Break Assessment Report recommendations (2019)	Inset Map 1	1,2
10	Map 6 (Southwell)	Amendments to Crew Lane Industrial Estate Policy Area	To remove SO/E/3 (Which is to be redesignated as reserved land) from policy area and amend area to reflect reduced size of SO/E/2 following removal of portion of site at risk of flooding (See above).	Inset Map 5	6
11	Map 1 (Newark North)	Amend Newark Urban Area	To include Tolney Lane policy area within Newark Urban Area	Inset Map 1	1, 2
12	Map 11 (Bilsthorpe)	Amend village envelope	To include the development under construction at Oldbridge Way and remove site Bi/Ho/1 as detailed above.	Inset Map 10	11
13	Map 15 (Laxton)	Inclusion of additional map	To include additional map detailing the new Laxton Policy Area Sha/L/1	N/A	15

The following table identifies the proposed changes to the housing, employment and retail allocations on a site-by-site basis:

## Appendix 2: Previously Proposed changes to the Publication Policies Map as consulted on in 2022.

<b><i>Housing &amp; Employment Allocations</i></b>					
<b>Change Ref</b>	<b>Publication AADMDPD Ref</b>	<b>Proposed Changes to Policies Map</b>	<b>Reason for Proposed Change</b>	<b>Online Policies Map Inset Ref<sup>2</sup></b>	<b>Publication AADMDPD Map Ref</b>
14	NUA/Ho/1	Remove from Policies Map	The site is no longer considered deliverable and is proposed for deallocation.	Inset Map 1	1
15	NUA/Ho/2	Amend site area on Policies Map	The allocation will be amended to remove the area to the west and the operational area of the homeless hostel of the allocation to reflect the areas that remain available for development.	Inset Map 1	1
16	NUA/Ho/3	Remove from Policies Map	The site is no longer considered deliverable and is proposed for deallocation.	Inset Map 1	1
17	NUA/Ho/8	Amend site area on Policies Map	The permission on a portion of the site for a 64-bed care home has now expired and so the area available for development has significantly increase, so the site area and capacity has been increased.	Inset Map 1	2
18	NUA/Ho/10	Amend site area on Policies Map	The Council has now purchased the allocation plus an additional area to the west and so the allocation site area and capacity has been amended accordingly.	Inset Map 1	2
19	NUA/Mu/2	Remove from Policies Map	There is uncertainty over the delivery of the site and is therefore proposed for deallocation.	Inset Map 1	1
20	NUA/Mu/3	Redesignate as Opportunity Site	There is currently no fixed timeframe for the transfer of the existing NSK engineering plan to a new site within the Newark Urban Area and so the delivery of the site within the Plan period is no longer certain.	Inset Map 1	1
21	NUA/E/3	Amend site area on Policies Map	Originally the allocation was made up of three parcels of land. One parcel has been developed and parts of the other two are now protected by a Tree Preservation Order. The site area has been reduced accordingly.	Inset Map 1	1
22	SO/Ho/1	Remove from Policies Map	The site has been delivered.	Inset Map 5	6

<sup>2</sup> [http://www.cartogold.co.uk/newark\\_sherwood/map.htm](http://www.cartogold.co.uk/newark_sherwood/map.htm)

## Appendix 2: Previously Proposed changes to the Publication Policies Map as consulted on in 2022.

23	SO/Ho/3	Remove from Policies Map	The site has been delivered.	Inset Map 5	6
24	SO/Ho/6	Remove from Policies Map	The site has been delivered.	Inset Map 5	6
25	SO/Ho/7	Amend site area on Policies Map	There is no longer a requirement to provide a bypass for Southwell and so as there is no longer a need to protect the route, the size of the allocation has been marginally increased to include the whole of the depot site.	Inset Map 5	6
26	SO/Mu/1	Remove from Policies map	The site is in use as open space and not available for development.	Inset Map 5	6
27	SO/E/2	Amend site area on Policies Map	The site area has been reduced to remove the areas of the allocation subject to flood risk.	Inset Map 5	6
28	SO/E/3	Redesignate as Reserved Land	To redesignate the site as reserved land to ensure it remains available for future development.	Inset Map 5	6
29	FA/Ho/1	Remove from Policies Map	The site has been delivered.	Inset Map 6	7
30	FA/Mu/1	Remove from Policies Map	The site has been delivered.	Inset Map 6	7
31	LO/Ho/1	Remove from Policies Map	The site is no longer considered deliverable and is proposed to be deallocated.	Inset Map 7	8
32	LO/Ho/2	Remove from Policies Map	The site has been delivered.	Inset Map 7	8
33	OB/Ho/1	Remove from Policies Map	The site has been delivered.	Inset Map 8	9
34	OB/Ho/2	Remove from Policies Map	The site has been delivered.	Inset Map 8	9
35	OB/Ho/3	Remove from Policies Map	The site has been delivered.	Inset Map 8	9
36	OB/Re/2	Remove from Policies Map	The site has been delivered.	Inset Map 8	9
37	Ed/Ho/1	Remove from Policies Map	The site has been delivered.	Inset Map 9	10

## Appendix 2: Previously Proposed changes to the Publication Policies Map as consulted on in 2022.

38	Bi/Ho/1	Remove from Policies Map	The site is no longer considered deliverable and is proposed to be deallocated.	Inset Map 10	11
39	Bi/Ho/2	Amend site area on Policies Map	To increase the site area of the allocation to reflect the land being in the same ownership and the entirety of the site having secured outline planning permission.	Inset Map 10	11
40	Bi/E/2	Remove from Policies Map	The site has been delivered.	Inset Map 10	11
41	Ra/Ho/1	Remove from Policies Map	The site has been delivered.	Inset Map 11	12
42	Bl/Ho/2	Remove from Policies Map	The site has been delivered.	Inset Map 13	14
43	Bl/Ho/4	Remove from Policies Map	The site is no longer considered deliverable and is proposed to be deallocated.	Inset Map 13	14
44	Bl/E/1	Amend site area on Policies Map	To reduce the site area as one discrete parcel of the allocation has been delivered.	Inset Map 13	14