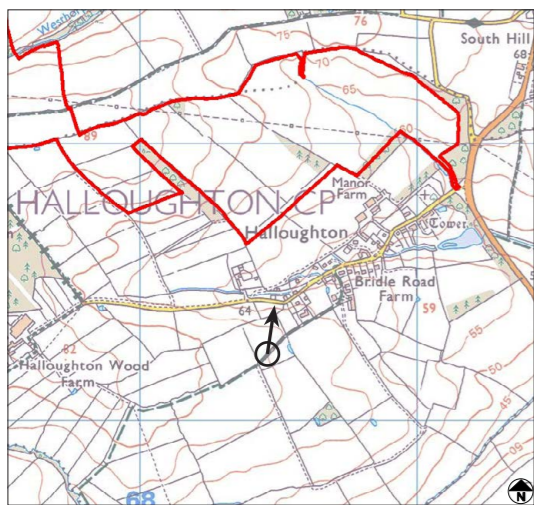




Existing View



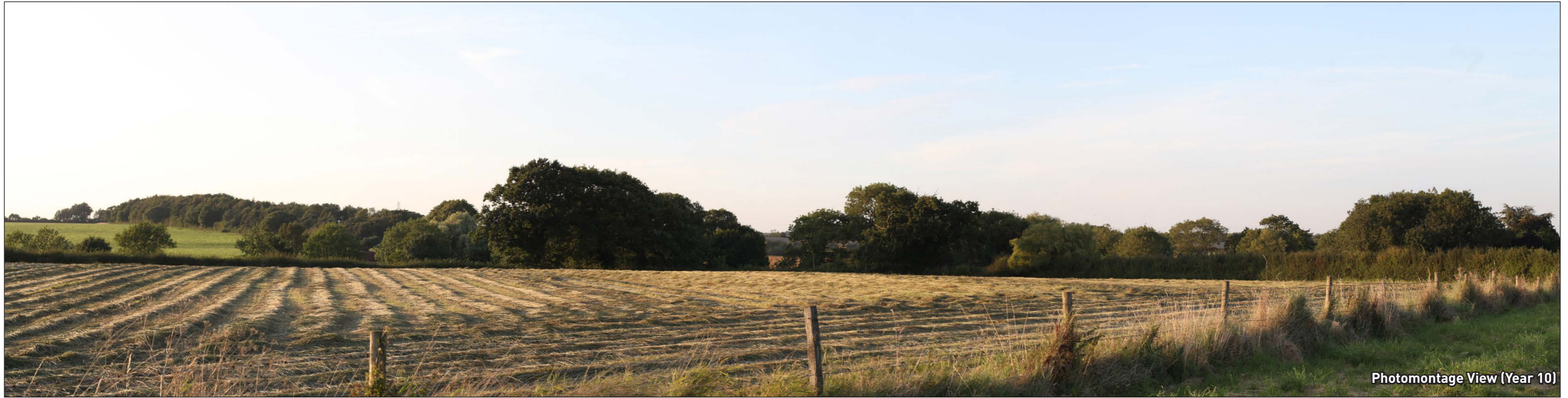
Photomontage View (Year 1)



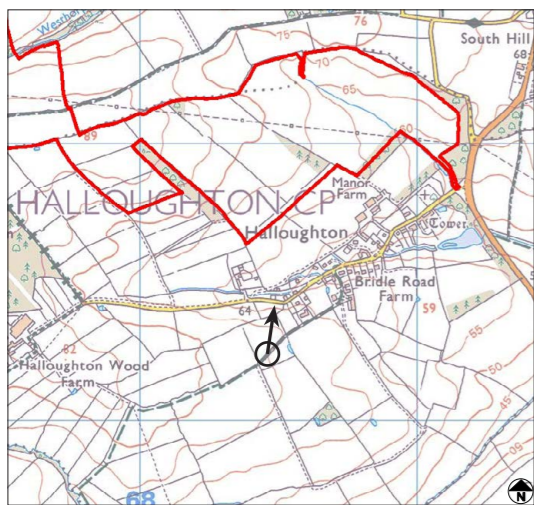
- Camera make & model - Canon 5D Mark III
- Lens make & focal length - Canon EF 50mm, f/1.4 USM
- Date & time of photograph - 23/08/2019 @ 19:37
- OS grid reference - 468465, 351235
- Viewpoint height (AOD) - 71m
- Distance from site - 418m
- Horizontal Field of View - 75°
- Height of camera AGL - 1.5m
- Page size (mm) - 420 x 297

### VIEWPOINT 10

View from PRow bridleway 186/3/1, looking north



Photomontage View (Year 10)



- Camera make & model - Canon 5D Mark III
- Lens make & focal length - Canon EF 50mm, f/1.4 USM
- Date & time of photograph - 23/08/2019 @ 19:37
- OS grid reference - 468465, 351235
- Viewpoint height (AOD) - 71m
- Distance from site - 418m
- Horizontal Field of View - 75°
- Height of camera AGL - 1.5m
- Page size (mm) - 420 x 297

## VIEWPOINT 10

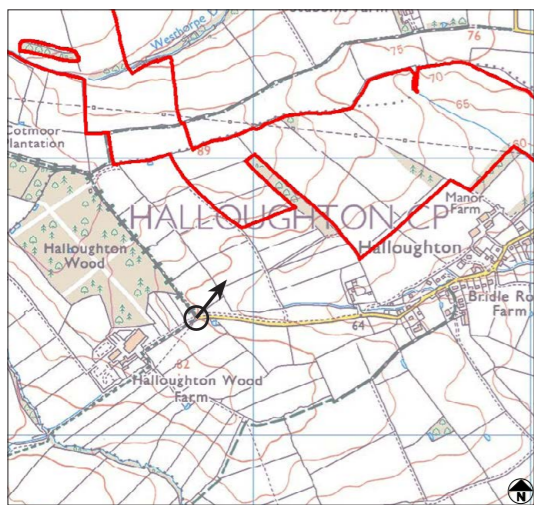
View from PRow bridleway 186/3/1, looking north



Existing View



Photomontage View (Year 1)



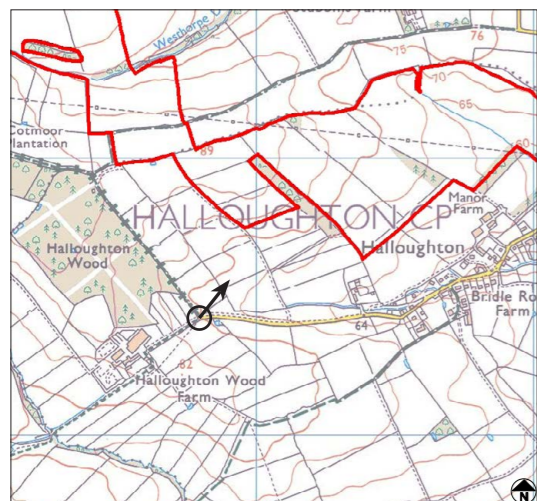
- Camera make & model - Canon 5D Mark III
- Lens make & focal length - Canon EF 50mm, f/1.4 USM
- Date & time of photograph - 23/08/2019 @ 18:16
- OS grid reference - 467802, 351430
- Viewpoint height (AOD) - 76m
- Distance from site - 357m
- Horizontal Field of View - 75°
- Height of camera AGL - 1.5m
- Page size (mm) - 420 x 297

**VIEWPOINT 12**

View from the southern extent of Cotmoor Lane Byway, looking northeast



Photomontage View (Year 10)



- Camera make & model - Canon 5D Mark III
- Lens make & focal length - Canon EF 50mm, f/1.4 USM
- Date & time of photograph - 23/08/2019 @ 18:16
- OS grid reference - 467802, 351430
- Viewpoint height (AOD) - 76m
- Distance from site - 357m
- Horizontal Field of View - 75°
- Height of camera AGL - 1.5m
- Page size (mm) - 420 x 297

## VIEWPOINT 12

View from the southern extent of Cotmoor Lane Byway,  
looking northeast