

SIMPLER RECYCLING BINGO!

This game is a fun way for pupils to learn, and consolidate, what can be recycled under the new 'Simpler Recycling' rules.

You will need:

- 16 bingo boards
- 11 caller cards
- 9 counters or pens to mark the bingo boards

We would suggest laminating the boards and cards for multiple use.

Setting up:

- Choose a pupil to be the '**bingo caller**' and give them the '**caller cards**'
- Issue a '**bingo board**' to each player (unless sharing)
- Issue counters or pens to mark the boards

Play Bingo:

- The '**bingo caller**' selects one '**caller card**', holds it up and reads out the item. Facts have been provided on each item to share if wanted. Keep the cards called out to one side for checking against winning boards.
- Players with the item called out must mark it with a counter or pen on their '**bingo board**'.
- Repeat until a player has 3 items marked off in a line – either horizontally, vertically or diagonally. Player should call out 'LINE' when this happens.
- The '**bingo caller**' should check the line is correct on the '**bingo board**' of the winning player.
- Continue playing until a player has all 9 items marked on their '**bingo board**'. Player should call out 'BINGO' when this happens.
- The '**bingo caller**' should check the winning board is correct against the '**caller cards**'.
- All players should clear their boards.
- The game can be repeated again and again!

Have fun!

SIMPLER RECYCLING BINGO!

All items can be placed in the dry, mixed recycling bin.

Shout **'LINE'** when you get **3 items in a row**, vertically, horizontally or diagonally.

Shout **'BINGO'** when you get all **9 items**.



plastic pots, tubs & trays



drink & food cartons



plastic tubes



plastic bottles



foil & foil trays



tins & cans



paper



**clean cardboard
packaging**



**aluminium pots, bottles
and lids**

SIMPLER RECYCLING BINGO!

All items can be placed in the dry, mixed recycling bin.

Shout **'LINE'** when you get **3 items in a row**, vertically, horizontally or diagonally.

Shout **'BINGO'** when you get all **9 items**.



**aerosols & aluminium
tubes**



tins & cans



**aluminium pots, bottles
and lids**



plastic pots, tubs & trays



foil & foil trays



paper



**clean cardboard
packaging**



plastic bottles



plastic tubes

SIMPLER RECYCLING BINGO!

All items can be placed in the dry, mixed recycling bin.

Shout **'LINE'** when you get **3 items in a row**, vertically, horizontally or diagonally.

Shout **'BINGO'** when you get all **9 items**.



**clean cardboard
packaging**



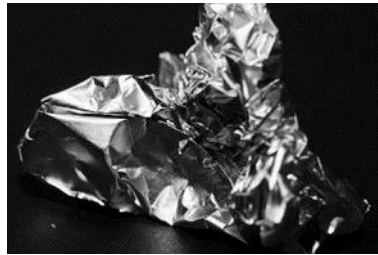
plastic pots, tubs & trays



plastic bottles



plastic tubes



foil & foil trays



drink & food cartons



**aluminium pots, bottles
and lids**



paper



**aerosols & aluminium
tubes**

SIMPLER RECYCLING BINGO!

All items can be placed in the dry, mixed recycling bin.

Shout **'LINE'** when you get **3 items in a row**, vertically, horizontally or diagonally.

Shout **'BINGO'** when you get all **9 items**.



plastic pots, tubs & trays



paper



tins & cans



drink & food cartons



foil & foil trays



plastic tubes



envelopes



plastic bottles



**clean cardboard
packaging**

SIMPLER RECYCLING BINGO!

All items can be placed in the dry, mixed recycling bin.

Shout **'LINE'** when you get **3 items in a row**, vertically, horizontally or diagonally.

Shout **'BINGO'** when you get all **9 items**.



tins & cans



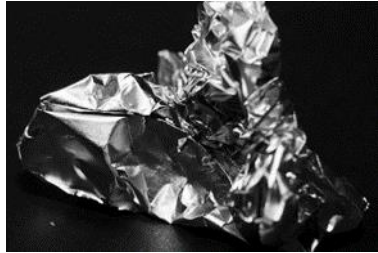
**aluminium pots, bottles
and lids**



**clean cardboard
packaging**



paper



foil & foil trays



plastic bottles



drink & food cartons



plastic tubes



plastic pots, tubs & trays

SIMPLER RECYCLING BINGO!

All items can be placed in the dry, mixed recycling bin.

Shout **'LINE'** when you get **3 items in a row**, vertically, horizontally or diagonally.

Shout **'BINGO'** when you get all **9 items**.



**aluminium pots, bottles
and lids**



**aerosols & aluminium
tubes**



**clean cardboard
packaging**



plastic tubes



foil & foil trays



paper



drink & food cartons



envelopes



plastic pots, tubs & trays

SIMPLER RECYCLING BINGO!

All items can be placed in the dry, mixed recycling bin.

Shout **'LINE'** when you get **3 items in a row**, vertically, horizontally or diagonally.

Shout **'BINGO'** when you get all **9 items**.



plastic tubes



**aluminium pots, bottles
and lids**



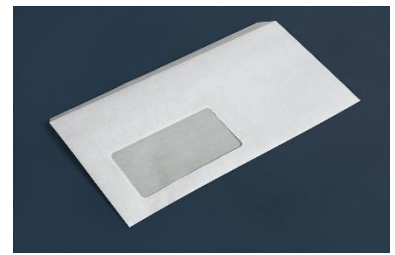
plastic pots, tubs & trays



**clean cardboard
packaging**



foil & foil trays



envelopes



tins & cans



plastic bottles



paper

SIMPLER RECYCLING BINGO!

All items can be placed in the dry, mixed recycling bin.

Shout **'LINE'** when you get **3 items in a row**, vertically, horizontally or diagonally.

Shout **'BINGO'** when you get all **9 items**.



tins & cans



plastic tubes



drink & food cartons



**aluminium pots, bottles
and lids**



foil & foil trays



**clean cardboard
packaging**



aerosols & metal tubes



plastic pots, tubs & trays



envelopes

SIMPLER RECYCLING BINGO!

All items can be placed in the dry, mixed recycling bin.

Shout **'LINE'** when you get **3 items in a row**, vertically, horizontally or diagonally.

Shout **'BINGO'** when you get all **9 items**.



plastic tubes



**clean cardboard
packaging**



plastic pots, tubs & trays



paper



foil & foil trays



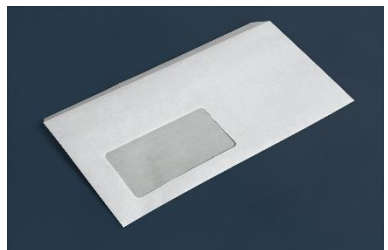
plastic bottles



tins & cans



drink & food cartons



envelopes

SIMPLER RECYCLING BINGO!

All items can be placed in the dry, mixed recycling bin.

Shout **'LINE'** when you get **3 items in a row**, vertically, horizontally or diagonally.

Shout **'BINGO'** when you get all **9 items**.



**aluminium pots, bottles
and lids**



**aerosols & aluminium
tubes**



paper



plastic tubes



foil & foil trays



plastic bottles



plastic pots, tubs & trays



tins & cans



drink & food cartons

SIMPLER RECYCLING BINGO!

All items can be placed in the dry, mixed recycling bin.

Shout **'LINE'** when you get **3 items in a row**, vertically, horizontally or diagonally.

Shout **'BINGO'** when you get all **9 items**.



plastic pots, tubs & trays



drink & food cartons



plastic tubes



**clean cardboard
packaging**



foil & foil trays



tins & cans



paper



plastic bottles



**aluminium pots, bottles
and lids**

SIMPLER RECYCLING BINGO!

All items can be placed in the dry, mixed recycling bin.

Shout **'LINE'** when you get **3 items in a row**, vertically, horizontally or diagonally.

Shout **'BINGO'** when you get all **9 items**.



**aerosols & aluminium
tubes**



tins & cans



plastic tubes



plastic pots, tubs & trays



foil & foil trays



paper



**clean cardboard
packaging**



plastic bottles



**aluminium pots, bottles
and lids**

SIMPLER RECYCLING BINGO!

All items can be placed in the dry, mixed recycling bin.

Shout **'LINE'** when you get **3 items in a row**, vertically, horizontally or diagonally.

Shout **'BINGO'** when you get all **9 items**.



**clean cardboard
packaging**



plastic pots, tubs & trays



plastic bottles



plastic tubes



**aerosols & aluminium
tubes**



drink & food cartons



**aluminium pots, bottles
and lids**



paper



foil & foil trays

SIMPLER RECYCLING BINGO!

All items can be placed in the dry, mixed recycling bin.

Shout **'LINE'** when you get **3 items in a row**, vertically, horizontally or diagonally.

Shout **'BINGO'** when you get all **9 items**.



plastic pots, tubs & trays



paper



tins & cans



drink & food cartons



plastic tubes



foil & foil trays



envelopes



plastic bottles



**clean cardboard
packaging**

SIMPLER RECYCLING BINGO!

All items can be placed in the dry, mixed recycling bin.

Shout **'LINE'** when you get **3 items in a row**, vertically, horizontally or diagonally.

Shout **'BINGO'** when you get all **9 items**.



foil & foil trays



**aluminium pots, bottles
and lids**



**clean cardboard
packaging**



paper



tins & cans



plastic bottles



drink & food cartons



plastic tubes



plastic pots, tubs & trays

SIMPLER RECYCLING BINGO!

All items can be placed in the dry, mixed recycling bin.

Shout **'LINE'** when you get **3 items in a row**, vertically, horizontally or diagonally.

Shout **'BINGO'** when you get all **9 items**.



**aluminium pots, bottles
and lids**



plastic tubes



**clean cardboard
packaging**



**aerosols & aluminium
tubes**



foil & foil trays



paper



drink & food cartons



envelopes



plastic pots, tubs & trays



tins & cans

- Aluminium and steel containers are endlessly recyclable, without losing quality.
- Aluminium containers can be back on our shelves just 60 days after you pop them in the recycling bin.
- Recycling a single soup can saves enough energy to run a television or computer for 3 hours.



plastic tubes

- These must be at least 40mm x 40mm big or they fall out of the recycling process.
- No DIY product tubes as residue can be damaging and contaminate the recycling.
- Toothpaste tubes are not being accepted as they are not made from one type of plastic.



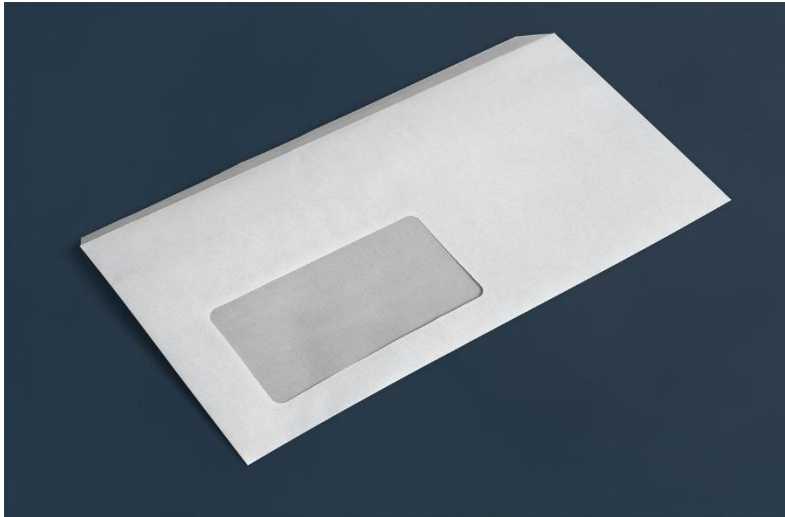
plastic pots, tubs & trays

- The little numbers in a triangle on the bottom of rigid plastics are a '*resin identification code*' which tells you what type of plastic the item is made from.
- The numbers range from 1-7 and are all different types of plastic and not all are easily recycled.



drink & food cartons

- Leave plastic tops on cartons to be recycled.
- These are made up of 70-80% paperboard, 20-30% plastic and around 5% aluminium.
- The multi-material design poses challenges in recycling.
- Flatten containers to save space in your bin!



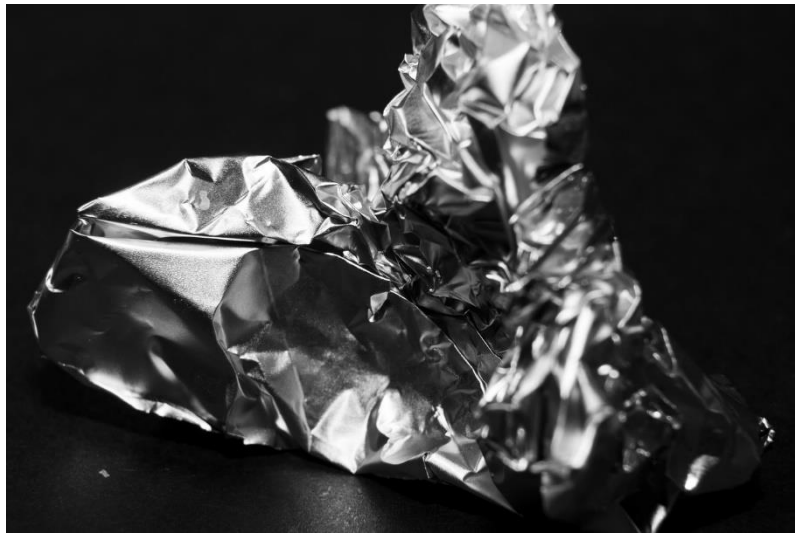
envelopes

- Those with a window can be recycled.
- No padded envelopes please as these are lined with plastic. If the plastic can be removed, the paper part can be recycled.
- Envelopes make up part of the 17.5 billion pieces of junk mail produced in the UK.



plastic bottles

- Nearly 16 million plastic bottles aren't recycled each year in the UK and over 8 million tonnes end up in the ocean.
- Leave caps on! Remove trigger sprays and pumps.
- Squash bottles to save space in you bin!
- Bottles are recycled in 6-8 weeks.



foil & foil trays

- Clean foil products before recycling.
- Recycling aluminium foil takes 95% less energy than making new aluminium.
- It can be recycled forever without losing quality too!



paper

- Add some paper to your compost bin or wormery as they love it!
- If magazines are intact, donate them to a library, school, or local doctor's surgery.
- Recycling paper takes about 7 days, and it can be recycled around 7 times before it becomes too weak to use again.



clean cardboard packaging

- Add some paper to your compost bin or wormery as they love it!
- Remove tape, glitter, foil and plastic inserts from packaging before recycling.
- No cardboard containing food, dirt or paint is to be recycled as they can't be made into new cardboard.



aluminium pots, bottles and lids

- Any steel or aluminium jar and bottle lids can be recycled.
- Aluminium pots and bottles used as packaging for drinks and cosmetics can be recycled.
- Aluminium containers can be back on our shelves just 60 days after you pop them in the recycling bin.



aerosols & aluminium tubes

- As these items cannot be rinsed out, ensure they are empty before recycling.
- Only aerosols **without** an orange cross or skull & crossbones can be recycled.
- Detach the lids and place them in your recycling!